



Botle Mokoena
0837550609
botlemokoena@dpg.co.za

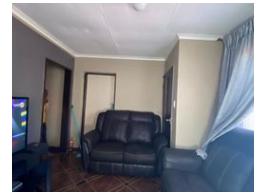
Contact Vanderbijlpark /
Sasolburg

016 4232876

Vision 21, Industrial Park,
Shop 26,
Steel Road,
Duncanville,
Vereeniging



Web Ref DPR19825



R610,000

Monthly Bond Repayment R6,090.12

Calculated over 20 years at 10.5% with no deposit.

Transfer Costs R23,709.00 **Bond Costs** R17,680.00

These calculations are only a guide. Please ask your conveyancer for exact calculations.

🛏 3 🚿 1.5 🚗 1

Comfortable Family Home with Potential

This neat and well-kept 3-bedroom home offers a comfortable and practical layout, perfect for families or first-time buyers. The bedrooms are generously sized and filled with natural light, creating a warm and inviting atmosphere throughout the home. The kitchen is functional and offers ample storage and workspace, making it easy to prepare daily meals. The spacious lounge provides a cozy area for relaxing or entertaining, with enough room for the whole family to enjoy.

The home includes 1.5 bathrooms – a full bathroom fitted with a bath and basin, and a separate toilet for added convenience and privacy. This thoughtful layout is ideal for busy households. A single garage provides secure parking, with additional space on the property for more vehicles if needed. With its solid structure and great potential, this home is a...

Features

Pets Allowed	Yes				
Interior		Exterior		Sizes	
Bedrooms	3	Garages	1	Land Size	264m ²
Bathrooms	1.5	Security	Yes		
Kitchens	1	Pool	No		
Recep. Rooms	1	Views	False		
Furnished	No				

