



Sekhele Mahola
0605453166
sekhelemahola@dpg.co.za

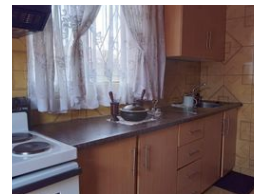
Contact Vanderbijlpark /
Sasolburg

016 4232876

Vision 21, Industrial Park,
Shop 26,
Steel Road,
Duncanville,
Vereeniging



Web Ref DPR11446



R620,000

2 1

Monthly Bond Repayment R6,294.42

Calculated over 20 years at 10.75% with no deposit.

Transfer Costs R23,730.00 **Bond Costs** R17,680.00

These calculations are only a guide. Please ask your conveyancer for exact calculations.

Monthly Rates R500

Charming Two-Bedroom Haven Awaits You!

Welcome to this cozy two-bedroom haven, where simplicity meets comfort in every detail. The open-plan design seamlessly connects the dining room, adorned with tiled floors and curtain rails, to the family/TV room, creating a welcoming space for gatherings and relaxation. The well-appointed kitchen features modern amenities, including a stove with an oven and hob, as well as a practical washing machine connection, all set against easy-to-maintain tiled floors.

The bathroom, with its tiled floors, offers a clean and functional space, complete with a basin, bath, and toilet. Each bedroom is thoughtfully designed, with laminated floors, curtain rails, and built-in cupboards in the first bedroom, providing both style and storage solutions. The second bedroom, featuring laminated floors and curtain rails, ensures a comfortable...

Features

Interior		Exterior	
Bedrooms	2	Security	No
Bathrooms	1	Pool	No
Kitchens	1	Views	False
Recep. Rooms	1		
Furnished	No		

