

1 Bedroom Apartment For Sale in Protea Glen



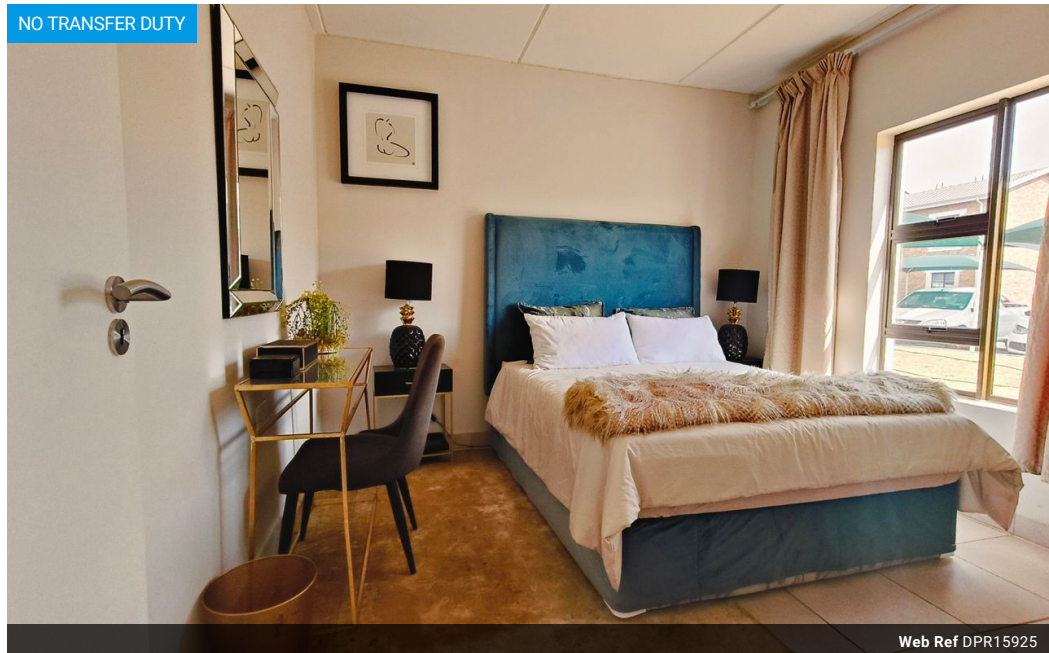
Jaco Bender
071 565 1106
jacobender@dpg.co.za

Contact Mossel Bay

061 5827042

La Palma Villas
Diaz Beach
Mossel Bay Central
6520

NO TRANSFER DUTY



Web Ref DPR15925



R539,000



Monthly Bond Repayment R5,472.08

Calculated over 20 years at 10.75% with no deposit.

Transfer Costs R21,217.00 **Bond Costs** R15,795.00

These calculations are only a guide. Please ask your conveyancer for exact calculations.

Monthly Levy R450 **Monthly Rates** R350

Find Your Perfect Home at Idube Lifestyle Village – Where Style, Security, and Community Meet!

Are you looking for a stylish, secure, and affordable home in a thriving, vibrant community?

Idube Lifestyle Village in Soweto offers modern 1 and 2-bedroom units, starting at an unbeatable R539,000. Move in TODAY and begin your new chapter in a place designed for modern living!

Why Idube Lifestyle Village?

Idube Lifestyle Village is more than just a place to live – it's a dynamic, welcoming community tailored to your lifestyle. With its blend of comfort, convenience, and security, this is where your dream home meets the reality of affordable living.

Key Features That Make Idube the Perfect Choice for You:

Stylish 1 & 2 Bedroom Units: Thoughtfully designed homes that blend modern style and comfort. Perfect for singles, couples, or small families, these units provide everything you need at a price you'll love. Starting at...

Features

Interior

Bedrooms	1
Bathrooms	1
Kitchens	1
Recep. Rooms	1
Furnished	No

Exterior

Carports / Parkings	1
Security	Yes
Pool	No
Views	False

Sizes

Floor Size	32m²
Land Size	6,500m²

Extras

24 Hour Access Bath, Toilet and Basin Communal Braai Area Carport Gym RUNNING TRACK
Secure Parking Security Complex Security Estate Security Gate Above Road Balcony 24 Hour
Response Built in Wardrobes Courtyard Chlorinator Cul_De_Sac Curtain Rails Granite Tops
Washing Machine Connection Tiled Floors Fibre Electric Fencing



<https://www.dpgprop.co.za>