



Tumi Semakane
0659946098
tumi.s@dpg.co.za

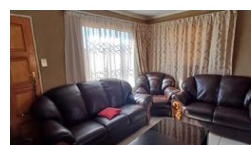
Contact Vanderbijlpark /
Sasolburg

016 4232876

Vision 21, Industrial Park,
Shop 26,
Steel Road,
Duncanville,
Vereeniging



Web Ref DPR14575



R790,000

🛏 2 🚿 1

Monthly Bond Repayment R8,020.31

Calculated over 20 years at 10.75% with no deposit.

Transfer Costs R25,898.00 **Bond Costs** R19,565.00

These calculations are only a guide. Please ask your conveyancer for exact calculations.

Monthly Rates R1,200

Charming, Cozy, Well-Appointed Home!

This charming property features a well-appointed kitchen with built-in cupboards, providing ample storage and a neat appearance. The lounge is designed for comfort and convenience, complete with a TV port for your entertainment needs.

The home includes two spacious bedrooms, each equipped with built-in cupboards, offering plenty of storage space. The bathroom is fitted with a bath, basin, and toilet, ensuring all essential amenities are covered. This cozy home is perfect for those seeking a comfortable and functional living space.

Features

Pets Allowed		Yes	
Interior		Exterior	
Bedrooms	2	Security	Yes
Bathrooms	1	Pool	No
Kitchens	1	Views	False
Recep. Rooms	1		
Furnished	No		
Sizes		Land Size	
		300m²	

