



**Kosie Erasmus**  
012 942 8555  
kosieerasmus@dpgprop.co.za

Contact Head Office - Dormehl  
Lite

012 0000000

1170 Moulton Avenue  
Waverley  
0184

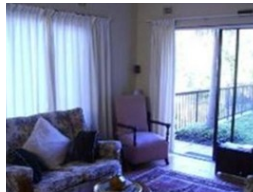
## 3 Bedroom House Sold in Blythedale Beach

**SOLD**



SOLE MANDATE

Web Ref BLIT-0159



**R1,550,000**

**Monthly Bond Repayment** R15,474.89

Calculated over 20 years at 10.5% with no deposit.

**Transfer Costs** R47,387.00 **Bond Costs** R28,990.00

These calculations are only a guide. Please ask your conveyancer for exact calculations.

3 Bedrooms 2 Bathrooms 2 Carports

## 3 Bedroom House Sold in Blythedale Beach

Price has been dropped to sell!!! Glorious sea views with pool and lovely garden. This property offers space galore, with good security. Live the famous Village Lifestyle within 10 minutes walk from the beach.

### Features

<b>Pets Allowed</b>	Yes			
<b>Interior</b>		<b>Exterior</b>		<b>Sizes</b>
Bedrooms	3	Garages	2	Floor Size
Bathrooms	2	Security	Yes	258m²
Recep. Rooms	2	Dom. Accom.	1	
Furnished	No	Pool	Yes	
		Views	No	

