



Gert Wepener
083 775 8465
gertwepener@dpg.co.za



Elmarie Wepener
083 661 8465

elmariewepener@dpg.co.za

Contact **Hermanus**

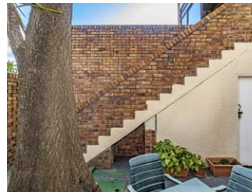
083 6618465

Hoofweg 36
De Kelders
Gansbaai
7220



SOLE MANDATE

Web Ref DPR19083



R2,900,000

Monthly Bond Repayment R29,441.64

Calculated over 20 years at 10.75% with no deposit.

Transfer Costs R152,055.00 **Bond Costs** R42,185.00

These calculations are only a guide. Please ask your conveyancer for exact calculations.



Student or young professionals accommodation.

Exclusive Mandate: One bedroom, one bathroom apartment with 2 designated parking areas (one in a gated area). This spacious apartment is ideally walking distance from the main campus and faculty of engineering and geology in the chamber of mines building.

The apartment is situated on the first floor with a private secured court yard downstairs. For more info or a viewing, please contact us.

More selling points: #Alarm system #Router and wifi # 2x parking spots # Extra security on gate # Burglar bars # Bath and shower in one # close to Stellmark, 2x churches and a veterinarian if you have a pet.

Features

Pets Allowed		Yes			
Interior				Exterior	
Bedrooms	1			Carports / Parkings	2
Bathrooms	1			Security	Yes
Kitchens	1			Pool	No
Recep. Rooms	1			Views	False
Furnished	No			Sizes	
				Floor Size	52m²