

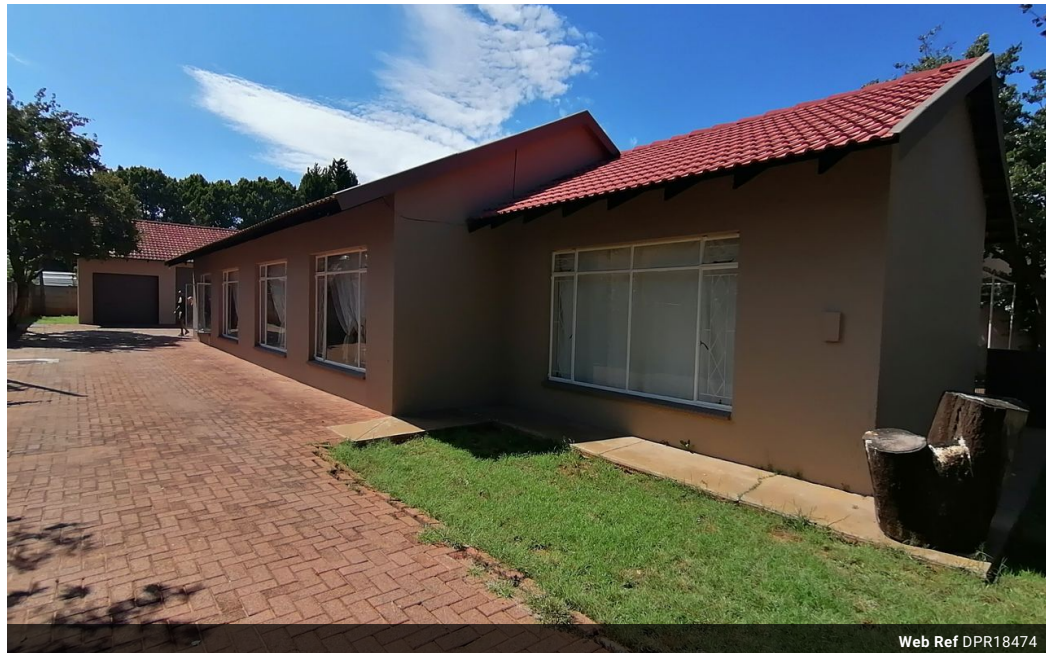


Julia Sefuthi
068 216 8782
julias@dpg.co.za

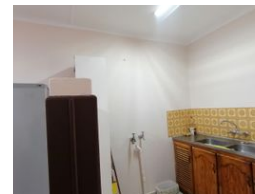
Contact Klerksdorp

083 2642457

8 De Wet Street
Stilfontein
2551



Web Ref DPR18474



R890,000

Monthly Bond Repayment R9,035.54

Calculated over 20 years at 10.75% with no deposit.

Transfer Costs R28,244.00 **Bond Costs** R21,450.00

These calculations are only a guide. Please ask your conveyancer for exact calculations.

🛏 3 🚿 2 🏠 2

Suitable for Big Family With Double Entrance

This clean property inside out boasts 3 bedrooms; main bedroom with own en-suite; with a bath, a shower, a basin and a toilet, the second bathroom offers a bath, a basin and a toilet, a lounge, a dining room, a spacious kitchen with scullery and laundry, entertainment area. Outside is a one bedroom flatlet with a lounge and a kitchenette, a bathroom with a shower, a basin and a toilet, extra outside toilet for guests. There a shade net next to the kitchen for extra parking or to relax with friends and family on special days. Call today to book your viewing appointment and call this beautiful place your new home.

Features

Pets Allowed Yes

Interior

Bedrooms	3
Bathrooms	2
Kitchens	1.5
Recep. Rooms	2
Furnished	No

Exterior

Garages	2
Carports / Parkings	4
Security	No
Pool	No
Views	False

Sizes

Floor Size	190m²
Land Size	953m²

