



**Logie Naidoo**  
082 455 6857  
logienaidoo@dpg.co.za

Contact KZN North

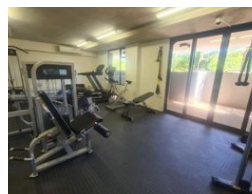
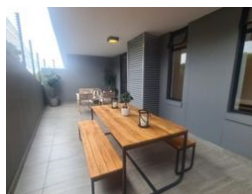
031 3500430

A1 Almil Centre  
47 Ashley Avenue  
Glenashley

## FEATURED



Web Ref DPR16418



## R2,595,000

2 2

**Monthly Bond Repayment** R25,907.96

Calculated over 20 years at 10.5% with no deposit.

**Transfer Costs** R123,461.00 **Bond Costs** R38,415.00

These calculations are only a guide. Please ask your conveyancer for exact calculations.

**CALLING ALL INVESTORS - JUST LISTED - APARTMENT IN CORAL POINT SIBAYA SELLING BELOW MARKET VALUE!**

**EXCELLENT INVESTMENT OPPORTUNITY!**

Take advantage of this well-lit airy apartment consisting of 2 bedrooms with 2 bathrooms, open plan kitchen lounge/dining room. Comes with 2 under cover parkings plus storage facility.

Well secure with 24 hours access control.

Gymnasium and laundromat in the building.\

Excellent value @ R2595 000. Market value is R3650 000.

Hurry this won't last long.

For viewing appointment, please contact Logie Naidoo.

## Features

### Interior

Bedrooms	2
Bathrooms	2
Kitchens	1
Recep. Rooms	1
Furnished	No

### Exterior

Carports / Parkings	2
Security	Yes
Pool	Yes
Views	True