



**Rithu Singh**  
071 380 7500  
rithusingh@dpg.co.za

Contact Umhlanga

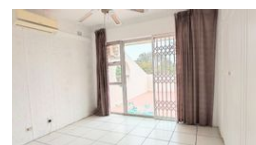
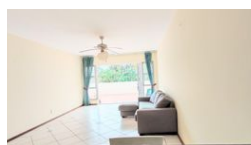
031 5612346

Shop 13A Granada Square  
16 Chartwell Drive  
Umhlanga

NEW



Web Ref DPR21568



**R2,250,000**

🛏 2 🚿 2 🚗 1

**Monthly Bond Repayment** R22,463.55

Calculated over 20 years at 10.5% with no deposit.

**Transfer Costs** R95,279.00 **Bond Costs** R36,530.00

These calculations are only a guide. Please ask your conveyancer for exact calculations.

**Monthly Levy** R3,463 **Monthly Rates** R2,658

## Apartment with Stunning Sea Views

This beautifully positioned apartment offers the perfect blend of comfort and coastal living. Situated in a sought-after location, it boasts breathtaking sea views from a spacious large balcony – ideal for entertaining or simply enjoying the sunset.

Inside, the home features two bathrooms, providing convenience and privacy, along with a lock-up garage for secure parking and extra storage. Designed for easy living, this residence captures natural light throughout and is just moments away from the beach, shops, and local amenities.

Whether as a holiday retreat, investment, or permanent residence, this property offers an outstanding lifestyle opportunity in one of the area's best location.

Move in, kick back, and let the sea breeze do the rest!

## Features

Interior		Exterior		Sizes	
Bedrooms	2	Garages	1	Floor Size	133m <sup>2</sup>
Bathrooms	2	Carports / Parkings	1	Land Size	4,826m <sup>2</sup>
Kitchens	1	Security	No		
Recep. Rooms	1	Pool	Yes		
Furnished	No	Views	True		

