



Stacy Fernandez
069 354 3613
stacy.f@dpg.co.za

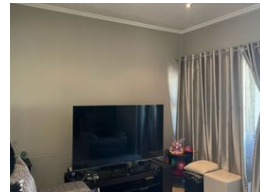
Contact Head Office - Dormehl
Lite

012 0000000

1170 Moulton Avenue
Waverley
0184



Web Ref DPR18717



R1,550,000

2 1

Monthly Bond Repayment R15,736.05

Calculated over 20 years at 10.75% with no deposit.

Transfer Costs R47,285.00 **Bond Costs** R28,990.00

These calculations are only a guide. Please ask your conveyancer for exact calculations.

Monthly Levy R1,559.4 **Monthly Rates** R1,308.4

Modern 2 Bedroom Apartment for Sale at Seasons Park!

Dormehl Phalane Property Group offers you this modern 2 bedroom apartment. It is fully fitted with porcelain tiles bright and airy unit with open plan lounge and kitchen with a balcony. There is one bathroom with shower, toilet and hand basin. This complex is well maintained with 24 Hr security communal gym and braai area and entertainment room. It also has one undercover parking bay. Price slightly negotiable. Close to all Umhlanga beaches, malls, hospital and schools easy access to freeways.

Features

Interior

Bedrooms	2
Bathrooms	1
Kitchens	1
Recep. Rooms	1
Furnished	No

Exterior

Carports / Parkings	1
Security	Yes
Pool	Yes
Views	True

Sizes

Floor Size	62m ²
------------	------------------