



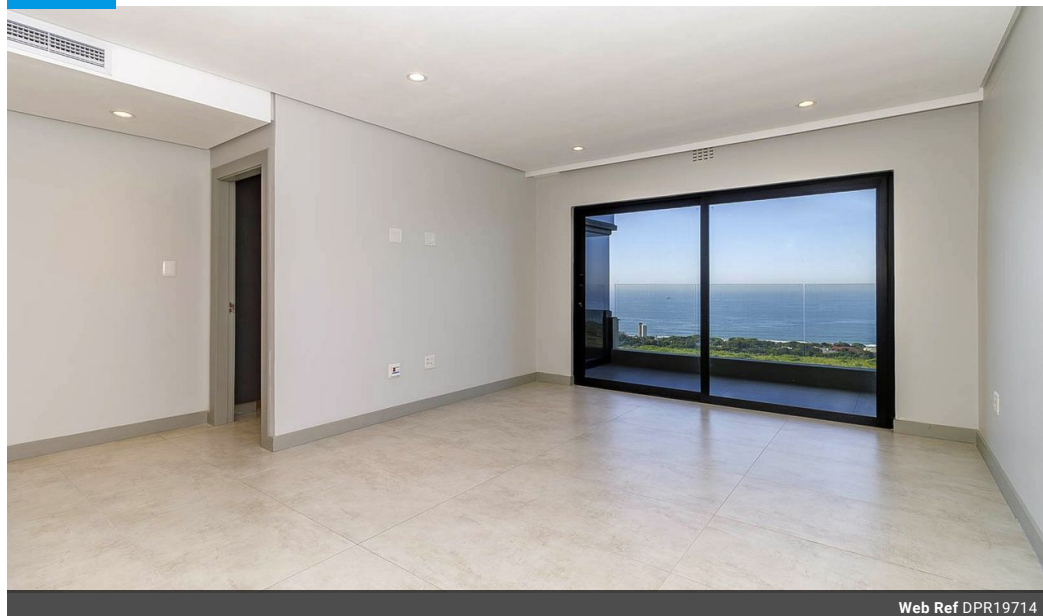
**Jan Eaglestone**  
078 485 2503  
janeaglestone@dpg.co.za

Contact Umhlanga

031 5612346

Shop 13A Granada Square  
16 Chartwell Drive  
Umhlanga

## FEATURED



Web Ref DPR19714



## R3,946,112

2 2

**Monthly Bond Repayment** R40,731.31

Calculated over 20 years at 11% with no deposit.

**Transfer Costs** R275,122.32 **Bond Costs** R51,610.00

These calculations are only a guide. Please ask your conveyancer for exact calculations.

**Monthly Levy** R3,630 **Monthly Rates** R2,913.8

## Modern Coastal Elegance with Spectacular Sea Views

Experience the ultimate in coastal living with this brand new, modern 2-bedroom, 2-bathroom (main en-suite) apartment, perfectly positioned to capture breathtaking sea views and the serene beauty of a safe and secure apartment complex.

Step into a light-filled, open-plan living space where the designer kitchen – complete with gas stove – flows effortlessly into the dining and lounge areas, opening onto a private patio that overlooks the sparkling complex swimming pool and the endless Indian Ocean horizon.

This apartment is tiled throughout for effortless maintenance and features built-in cupboards in bedrooms.

Ducted air conditioning, and Fibre connectivity for modern convenience.

A dedicated laundry/storage room adds further practicality to this coastal retreat.

Additional features include 2 secure parking bays in the...

## Features

### Interior

Bedrooms	2
Bathrooms	2
Kitchens	1
Recep. Rooms	2
Furnished	No

### Exterior

Carports / Parkings	2
Security	Yes
Pool	Yes
Views	True

### Sizes

Floor Size	118m²
------------	-------

### Extras

24 Hour Access Air Conditioner

