

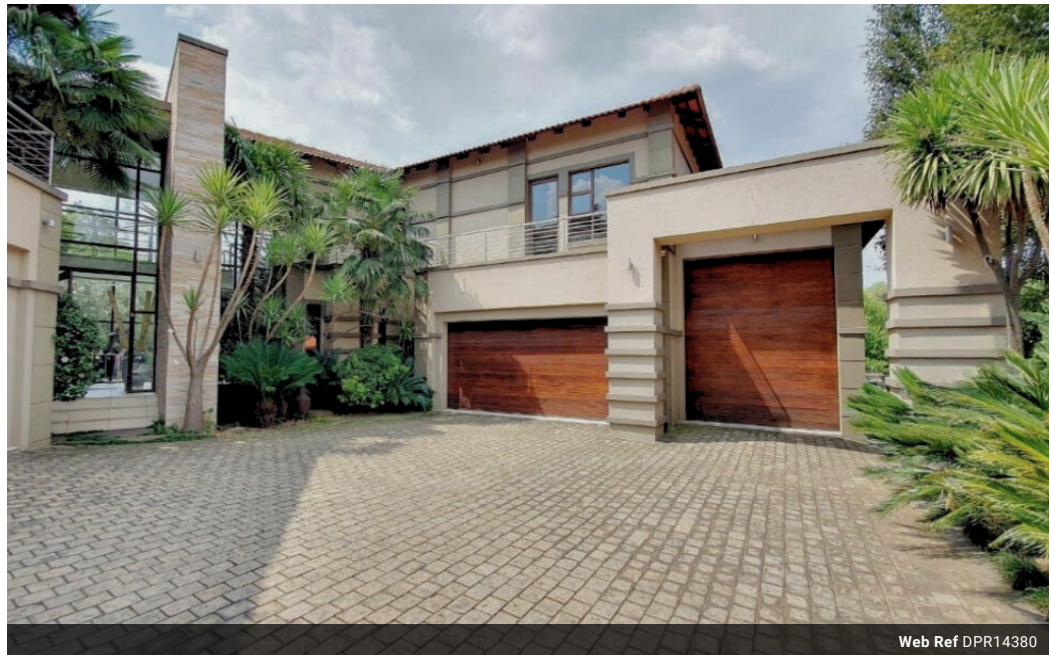


Mathilene Henn
0722269985
vanderbijl@dpg.co.za

Contact Vanderbijlpark /
Sasolburg

016 4232876

Vision 21, Industrial Park,
Shop 26,
Steel Road,
Duncanville,
Vereeniging



Web Ref DPR14380



R8,380,000

🛏 4 🚿 5.5 🚗 5

Monthly Bond Repayment R85,076.19

Calculated over 20 years at 10.75% with no deposit.

Transfer Costs R797,014.00 **Bond Costs** R80,035.00

These calculations are only a guide. Please ask your conveyancer for exact calculations.

Monthly Levy R2,900 **Monthly Rates** R1,450

Luxurious Golf Course View Estate!

Welcome to this spectacular property offering unparalleled privacy and breathtaking views of the golf course. Spanning 800m², this home is adorned with exquisite finishes and boasts:

Four bedrooms, including a master suite with His & Hers walk-in closets and a cozy fireplace, as well as Bedroom 4 featuring its own fireplace and walk-in closet. There are four luxurious en-suite bathrooms, two featuring spa baths and outdoor showers, alongside a fifth bathroom accessible from the upstairs lounge. The kitchen is a chef's delight with rosewood cupboards, granite countertops, an island with hob & extractor, and double eye-level oven, complemented by a separate laundry and scullery for added convenience.

The open-plan living and dining areas feature stacker doors that lead to the expansive entertainment area, complete with a bar in...

Features

Pets Allowed		Yes			
Interior		Exterior		Sizes	
Bedrooms	4	Garages	5	Land Size	1,100m²
Bathrooms	5.5	Security	Yes		
Kitchens	1	Pool	Yes		
Recep. Rooms	2	Views	True		
Studies	1				
Furnished	No				

