



**Estelle Spies**  
0734037057  
estellespies@dpg.co.za

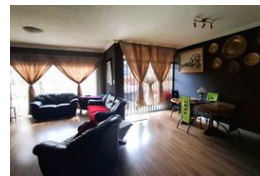
Contact Vanderbijlpark /  
Sasolburg

016 0042353

Vision 21, Industrial Park,  
Shop 26,  
Steel Road,  
Duncanville,  
Vereeniging



Web Ref DPR15510



**R1,048,000**

3 Bedrooms 2 Bathrooms 1 Garage

**Monthly Bond Repayment** R10,639.60

Calculated over 20 years at 10.75% with no deposit.

**Transfer Costs** R32,749.00 **Bond Costs** R25,220.00

These calculations are only a guide. Please ask your conveyancer for exact calculations.

**Monthly Levy** R1,900 **Monthly Rates** R500

## Duplex Townhouse In Flora Gardens

This charming 3-bedroom duplex townhouse offers a perfect blend of comfort and convenience, ideal for families or professionals seeking a spacious and modern home. The open-plan lounge is designed to create a warm and inviting atmosphere, seamlessly flowing into a large kitchen equipped with built-in cupboards, perfect for those who enjoy cooking and entertaining. The townhouse boasts an ideal patio area, perfect for hosting friends and family or relaxing outdoors. This pet-friendly home welcomes your furry companions, allowing them to enjoy the spacious surroundings.

A single garage is included, along with additional parking spaces for visitors, ensuring hassle-free parking at all times. The townhouse is nestled in a private area, providing an added sense of security and tranquility. Whether you're looking for a peaceful...

## Features

<b>Pets Allowed</b>	Yes				
<b>Interior</b>		<b>Exterior</b>		<b>Sizes</b>	
Bedrooms	3	Garages	1	Floor Size	236m²
Bathrooms	2	Carports / Parkings	1		
Kitchens	1	Security	Yes		
Recep. Rooms	2	Pool	No		
Furnished	No	Views	False		