

**Thys Human**  
0729896258  
thyshuman@dpg.co.za

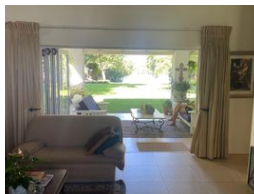
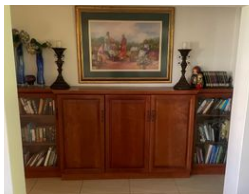
Contact Vanderbijlpark / Sasolburg

016 4232876

Vision 21, Industrial Park,  
Shop 26,  
Steel Road,  
Duncanville,  
Vereeniging



Web Ref DPR18002



R6,800,000

3 2

**Monthly Bond Repayment** R69,035.57  
Calculated over 20 years at 10.75% with no deposit.  
**Transfer Costs** R611,766.00    **Bond Costs** R70,535.00  
These calculations are only a guide. Please ask your conveyancer for exact calculations.  
**Monthly Rates** R5,600

## Stunning Riverfront Property with Cottages

Experience the ultimate riverfront lifestyle with this breathtaking property, offering stunning water views and an array of features designed for comfort and relaxation. The main house boasts three spacious bedrooms, two bathrooms, a welcoming lounge, a dining room, and a well-equipped kitchen. An entertainment area with a built-in braai provides the perfect space for gatherings, while the property also includes a shed, storeroom, and an outside toilet for added convenience.

Ideal for extended family or generating rental income, the property features three charming cottages—one with two bedrooms, a bathroom, lounge, and kitchen, and two additional cottages each offering a cozy one-bedroom layout with a bathroom, lounge, and kitchen. Enjoy the luxury of direct river access with a private boat launch and jetty, making this a...

## Features

<b>Pets Allowed</b>	Yes			
<b>Interior</b>		<b>Exterior</b>		<b>Sizes</b>
Bedrooms	3	Carports / Parkings	1	Land Size
Bathrooms	2	Security	Yes	33,627m²
Kitchens	1	Pool	No	
Recep. Rooms	2	Views	True	
Furnished	No			
<b>Extras</b>				
Riverfrontage Jetty Boat Launch				