



Botle Mokoena
0837550609
botlemokoena@dpg.co.za

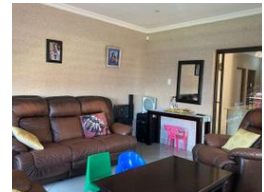
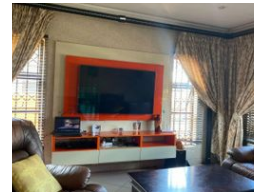
Contact Vanderbijlpark /
Sasolburg

016 4232876

Vision 21, Industrial Park,
Shop 26,
Steel Road,
Duncanville,
Vereeniging



Web Ref DPR11568



R1,450,000

3 3 2

Monthly Bond Repayment R14,720.82

Calculated over 20 years at 10.75% with no deposit.

Transfer Costs R44,285.00 **Bond Costs** R28,990.00

These calculations are only a guide. Please ask your conveyancer for exact calculations.

Monthly Rates R1,200

Luxurious Family Home with Security!

This stunning property boasts three bedrooms, each offering comfort and style. The master bedroom features built-in cupboards and laminated floors, creating a cozy retreat. The two additional bedrooms also offer built-in cupboards and laminated floors, ensuring ample storage space and a cohesive aesthetic throughout. The three bathrooms provide convenience and luxury, with Bathroom 1 equipped with a basin, bath, blinds, and toilet, Bathroom 2 featuring a basin, bath, shower, and toilet, and Bathroom 3 offering a separate toilet.

The spacious kitchen is a chef's delight, featuring a breakfast nook, stove with oven and hob, tiled floors, blinds, a center island, and an under-counter oven, all perfect for culinary endeavors. The living room/lounge, adorned with tiled floors, offers a welcoming space for relaxation and...

Features

Interior		Exterior		Sizes	
Bedrooms	3	Garages	2	Land Size	311m ²
Bathrooms	3	Carports / Parkings	2		
Kitchens	1	Security	Yes		
Recep. Rooms	1	Pool	No		
Furnished	No	Views	False		

