

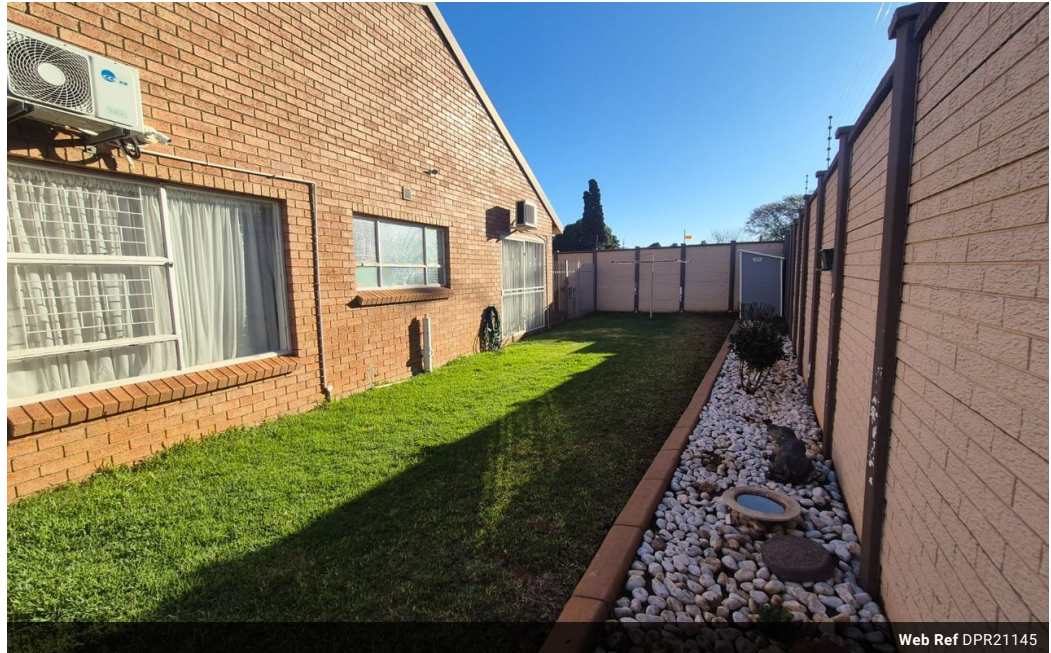


**Niki Boutsikaris**  
0647069107  
nikiboutsikaris@dpg.co.za

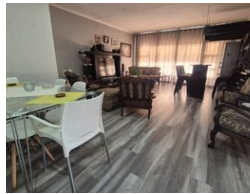
Contact Vanderbijlpark /  
Sasolburg

016 4232876

Vision 21, Industrial Park,  
Shop 26,  
Steel Road,  
Duncanville,  
Vereeniging



Web Ref DPR21145



**R1,300,000**

🛏 2 🚿 1 🚗 1

**Monthly Bond Repayment** R12,978.94

Calculated over 20 years at 10.5% with no deposit.

**Transfer Costs** R37,719.00

**Bond Costs** R27,105.00

These calculations are only a guide. Please ask your conveyancer for exact calculations.

**Monthly Levy** R2,555

**Monthly Rates** R750

## Modern Secure 2-Bedroom Townhouse

Modern 2-Bedroom Townhouse in Popular Secure Complex. This lovely 2-bedroom townhouse offers comfortable, modern living in a sought-after, secure complex. Both bedrooms are well-sized, and includes a air-conditioner for year-round comfort. The sleek, modern bathroom adds a stylish touch to the home. The open-plan lounge and dining area feature beautiful laminated floors, creating a warm and welcoming living space that flows seamlessly into a spacious kitchen with ample counter space and storage – perfect for home cooking and entertaining.

Step outside to a charming patio and small, easy-to-maintain garden with a cozy boma area – ideal for relaxing evenings and entertaining friends. Security and peace of mind are top priorities, with features including an alarm system, electric fencing, CCTV cameras, and an inverter with 2...

## Features

**Pets Allowed** Yes

### Interior

Bedrooms	2
Bathrooms	1
Kitchens	1
Recep. Rooms	2
Furnished	No

### Exterior

Garages	1
Security	Yes
Pool	No
Views	False

### Sizes

Land Size	140m²
-----------	-------

