



**Botle Mokoena**  
0837550609  
botlemokoena@dpg.co.za

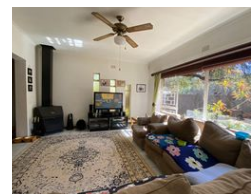
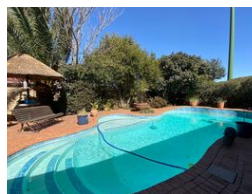
Contact Vanderbijlpark /  
Sasolburg

016 4232876

Vision 21, Industrial Park,  
Shop 26,  
Steel Road,  
Duncanville,  
Vereeniging



Web Ref DPR20795



**R1,605,000**

3 2 4

**Monthly Bond Repayment** R16,024.00

Calculated over 20 years at 10.5% with no deposit.

**Transfer Costs** R51,205.00 **Bond Costs** R30,875.00

These calculations are only a guide. Please ask your conveyancer for exact calculations.

**Monthly Rates** R1,300

## Entertainer's Dream Family Home

Welcome to this expansive and inviting home that perfectly blends comfort, style, and entertainment—ideal for families who love both relaxed living and hosting guests. Boasting 3 generously sized bedrooms and 2 well-appointed bathrooms, this home offers plenty of space for the whole family. The layout includes a cozy lounge with a built-in fireplace, creating the perfect setting for winter evenings, and a separate dining room for shared meals and gatherings. The kitchen is both functional and spacious, featuring ample cabinetry and a dedicated laundry area, ensuring daily routines are easy and efficient. Whether you're cooking for the family or entertaining friends, this space has everything you need.

Step outside and discover your private oasis—an entertainer's dream! A sparkling swimming pool invites you to enjoy summer...

## Features

Pets Allowed		Yes			
Interior		Exterior		Sizes	
Bedrooms	3	Garages	4	Land Size	870m²
Bathrooms	2	Security	Yes		
Kitchens	1	Dom. Accom.	1		
Recep. Rooms	2	Pool	Yes		
Furnished	No	Views	False		

