



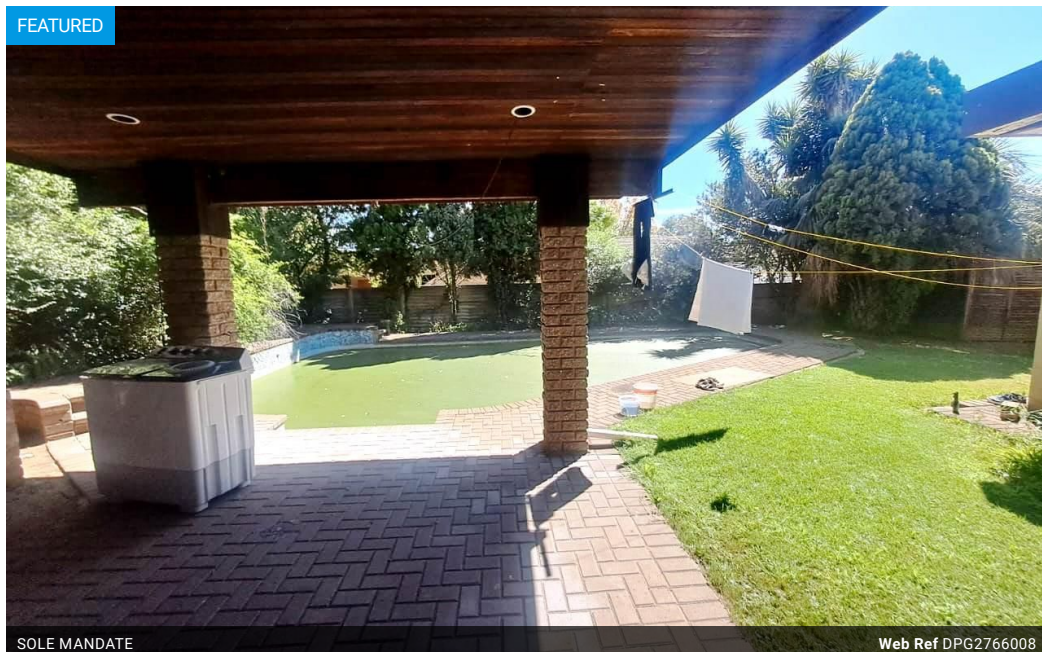
**Mathilene Henn**  
072 226 9985  
vanderbijl1@dpg.co.za

Contact Vanderbijlpark /  
Sasolburg

016 0042353

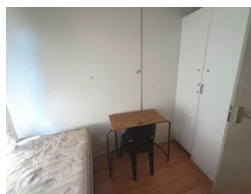
Shop 2,  
The Palms Shopping Center,  
Louis Trichardt Blvd,  
Vanderbijlpark,  
1911

#### FEATURED



SOLE MANDATE

Web Ref DPG2766008



**R1,350,000**

12 4

**Monthly Bond Repayment** R13,705.59

Calculated over 20 years at 10.75% with no deposit.

**Transfer Costs** R39,117.00 **Bond Costs** R27,105.00

These calculations are only a guide. Please ask your conveyancer for exact calculations.

**Monthly Rates** R2,800

#### Ready to go Student Accommodation!

Situated walking distance from VUT, it is the perfect place to stay for students. 15 Rooms available already set to be occupied. Communal kitchen. Showers and toilets for communal use. Tiled and laminated flooring featured through out the interior which makes for quick and easy cleaning. Spacious bedrooms with built-in cupboards. A sizable kitchen with built-in cupboards for storage.

A big swimming pool which is a bonus. Borehole to save on water usage. Storage room to have some extra space. An ideal purchase to then be rented out as student accommodation. A generating income of approximately R 24 000.00. Furniture not included in purchase price however negotiable to sell. Call today and let's arrange a viewing!

#### Features

|                     |     |                     |     |              |       |
|---------------------|-----|---------------------|-----|--------------|-------|
| <b>Pets Allowed</b> | Yes |                     |     |              |       |
| <b>Interior</b>     |     | <b>Exterior</b>     |     | <b>Sizes</b> |       |
| Bedrooms            | 12  | Carports / Parkings | 2   | Land Size    | 889m² |
| Bathrooms           | 4   | Security            | Yes |              |       |
| Kitchens            | 1   | Pool                | Yes |              |       |
| <b>Extras</b>       |     |                     |     |              |       |
| Wendy House         |     |                     |     |              |       |

