



Jolene Foster
0677873076
jolenefoster@dpg.co.za



Mathilene Henn
0722269985
vanderbijl@dpg.co.za

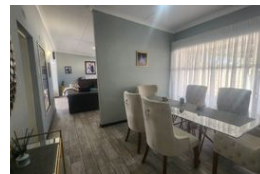
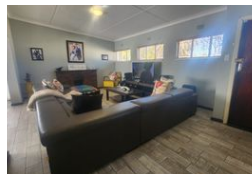
Contact Vanderbijlpark /
Sasolburg

016 4232876

Vision 21, Industrial Park,
Shop 26,
Steel Road,
Duncanville,
Vereeniging



Web Ref DPR20342



R1,250,000

3 2 1

Monthly Bond Repayment R12,479.75

Calculated over 20 years at 10.5% with no deposit.

Transfer Costs R36,219.00 **Bond Costs** R27,105.00

These calculations are only a guide. Please ask your conveyancer for exact calculations.

Monthly Rates R1,350

Comfortable Family Home with Extras

Nestled in the desirable neighborhood of SW1, this neat and well-maintained 3-bedroom home is a true gem for families seeking comfort, security, and ample entertainment space. From the moment you arrive, you're welcomed by an electric gate and paved driveway that lead to a spacious yard, ideal for kids and pets to enjoy.

Inside, the home boasts three generously sized bedrooms with built-in cupboards, and two bathrooms—including a main en-suite—designed for family convenience. The heart of the home features a modern kitchen with loads of workspace, flowing into a bright dining room perfect for shared meals and memories. A separate laundry room adds to the practicality of daily living. The lounge, complete with a cozy fireplace, and an additional TV room or study area offer flexible living space to suit your needs.

Step outside...

Features

Pets Allowed		Yes			
Interior				Exterior	
Bedrooms	3			Garages	1
Bathrooms	2			Carports / Parkings	1
Kitchens	1			Security	Yes
Recep. Rooms	3			Dom. Accom.	1
Furnished	No			Pool	Yes
				Views	False
				Sizes	
				Land Size	1,131m²

