

4 Bedroom House For Sale in Bedworth Park



Royalt Kubheka
0622588216
royaltkubheka@dpg.co.za

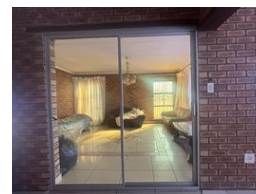
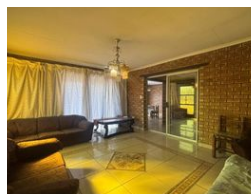
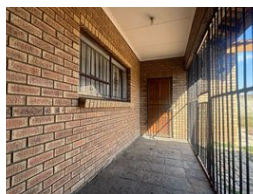
Contact Vereeniging

016 4232876

Vision 21, Industrial Park,
Shop 26,
Steel Road,
Duncanville,
Vereeniging



Web Ref DPR20168



R2,150,000

🛏 4 🚿 3 🚗 2

Monthly Bond Repayment R21,465.17

Calculated over 20 years at 10.5% with no deposit.

Transfer Costs R87,088.00 **Bond Costs** R34,625.00

These calculations are only a guide. Please ask your conveyancer for exact calculations.

Monthly Rates R1,500

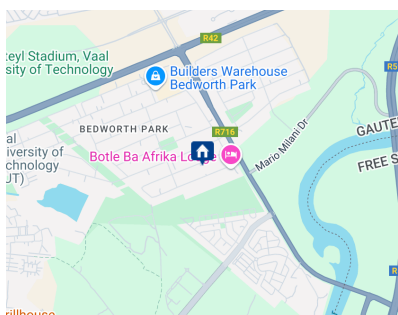
charming four-bedroom family home is ideally situated in the tranquil suburb of Bedworth Park

This charming four-bedroom family home is ideally situated in the tranquil suburb of Bedworth Park, just minutes from the heart of Bedworth town centre. Blending comfort, space, and functionality, it offers an ideal living environment for growing families or professionals working from home. Upon entering, you're welcomed into a spacious open-plan living and dining area, filled with natural light and perfect for entertaining or relaxing. The modern kitchen is well-appointed with ample storage and counter space, making it a practical hub of the home. A separate study provides a quiet space for remote work, reading, or managing household affairs.

The four generously sized bedrooms offer flexibility for family members or guests. The standout feature is the luxurious main bedroom, which includes a walk-in closet—offering both style...

Features

Pets Allowed	Yes		
Interior		Exterior	Sizes
Bedrooms	4	Garages	Land Size
Bathrooms	3	Carports / Parkings	2,067m ²
Kitchens	1	Security	
Recep. Rooms	2	Pool	
Studies	1	Views	
Furnished	No		



<https://www.dpgprop.co.za>