



Maletsatsi Radebe
0760122832
maletsatsir@dpg.co.za

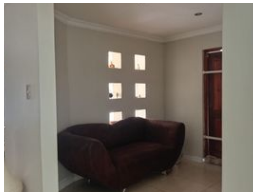
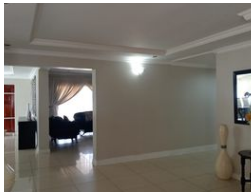
Contact Vanderbijlpark / Sasolburg

016 4232876

Vision 21, Industrial Park,
Shop 26,
Steel Road,
Duncanville,
Vereeniging



SOLE MANDATE Web Ref DPR16001



R1,750,000

4 2 1

Monthly Bond Repayment R17,471.65
Calculated over 20 years at 10.5% with no deposit.
Transfer Costs R58,141.00 Bond Costs R30,875.00
These calculations are only a guide. Please ask your conveyancer for exact calculations.
Monthly Rates R1,500

Luxurious Escape with Modern Comforts!

SOLE MANDATE!

Introducing an expansive 8000 square meter property located in the serene and sought-after De Deur, ideal for those seeking a balance of space, comfort, and countryside charm. This 4-bedroom home is a haven of tranquility, featuring a luxurious main bedroom with a full en suite bathroom, while two additional bathrooms – one with a bath, basin, and toilet, and a convenient guest toilet – provide ample convenience for family and guests. The heart of the home is its modern kitchen, complete with a scullery and extractor fan, catering to all your culinary needs. Entertain in style with a formal dining room, a cozy lounge, and a TV room room enhanced by a warming fireplace, creating inviting spaces for family time and relaxation.

Step outside onto the spacious patio, where a built-in braai promises endless opportunities...

Features

Pets Allowed		Yes			
Interior				Sizes	
Bedrooms	4			Land Size	8,008m²
Bathrooms	2				
Kitchens	1				
Recep. Rooms	3				
Furnished	No				
Exterior					
Garages	1				
Security	Yes				
Pool	No				
Views	False				

