



Barry Van Schalkwyk
060 896 4719
barryvschalkwyk@dpg.co.za

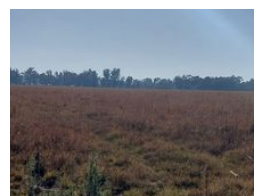
Contact Meyerton

016 0042352

24 Glynn Street
Rothdene,
Meyerton,
1961



Web Ref DPR13891



R401,200

Monthly Bond Repayment R4,005.50

Calculated over 20 years at 10.5% with no deposit.

Transfer Costs R17,984.00 **Bond Costs** R12,935.00

These calculations are only a guide. Please ask your conveyancer for exact calculations.

Vacant Land for Sale in De Deur.

Discover the perfect opportunity to build your dream home or invest in a prime piece of real estate in the serene and rapidly developing area of De Deur. This expansive vacant land offers a blank canvas for you to create a custom residence or capitalize on the growing demand for properties in this picturesque region.

Features

