

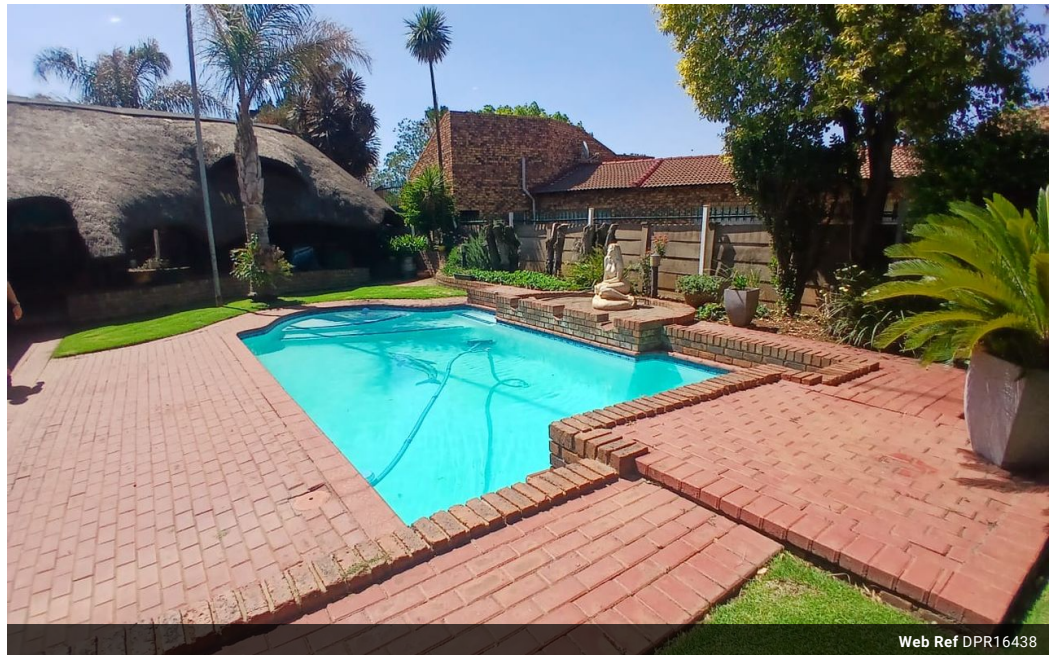


Jeandre Coetzer
0663271196
jeandrecoetzer@dpg.co.za

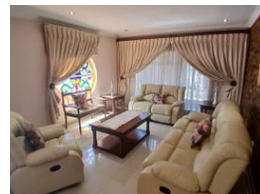
Contact Vereeniging

016 4232876

Vision 21, Industrial Park,
Shop 26,
Steel Road,
Duncanville,
Vereeniging



Web Ref DPR16438



R1,882,000

4 2 2

Monthly Bond Repayment R19,106.61

Calculated over 20 years at 10.75% with no deposit.

Transfer Costs R68,126.00

Bond Costs R32,760.00

These calculations are only a guide. Please ask your conveyancer for exact calculations.

Monthly Rates R1,500

4 Bedroom Family Home With Flatlet!

Nestled in the sought-after neighborhood of Falcon Ridge, this well-maintained home promises comfort, style, and thoughtful details. Upon entering, you'll find a formal lounge and dining area with a seamless natural flow, both tastefully tiled and leading into a cozy family/TV room. This inviting space opens directly onto a spacious lapa area, ideal for hosting and enjoying family gatherings. The heart of the home, the kitchen, is designed with functionality and charm in mind. It features a modern gas hob, electric oven, breakfast nook, and a scullery, creating a welcoming space for cooking and daily meals. With four generously sized bedrooms, three of which include built-in cupboards, and two pristine bathrooms, this home provides ample space and comfort for the whole family.

Step outside to enjoy the expansive outdoor...

Features

Pets Allowed Yes

Interior

Bedrooms	4
Bathrooms	2
Kitchens	1
Recep. Rooms	3
Furnished	No

Exterior

Garages	2
Security	Yes
Pool	Yes
Views	False

Sizes

Land Size	1,004m²
-----------	---------

Extras

Lapa Built In Braai Flatlet