



Botle Mokoena
0837550609
botlemokoena@dpg.co.za

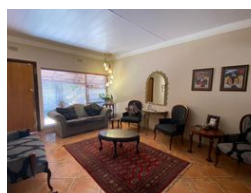
Contact Vereeniging

016 4232876

Vision 21, Industrial Park,
Shop 26,
Steel Road,
Duncanville,
Vereeniging



Web Ref DPR16559



R1,177,000

🛏 3 🚿 2 🏠 2

Monthly Bond Repayment R11,949.24

Calculated over 20 years at 10.75% with no deposit.

Transfer Costs R32,749.00 **Bond Costs** R25,220.00

These calculations are only a guide. Please ask your conveyancer for exact calculations.

Monthly Rates R2,500

Spacious Family Home with Amenities

This spacious home is thoughtfully designed to meet all your living and entertainment needs. Inside, you'll find a comfortable lounge, a cozy TV room, and an open-plan dining room that seamlessly connects to a well-equipped kitchen featuring a gas stove and a dedicated laundry area. With three generously sized bedrooms, all fitted with built-in cupboards—one room offering the added convenience of double cupboards—there's ample storage for the whole family. The main bedroom includes an en-suite bathroom, while an additional full bathroom serves the other bedrooms.

The outdoor space is perfect for leisure and gatherings, complete with a sparkling pool, a lapa for shaded relaxation, two garages, and a six-car carport. Additional features include a backup inverter system, borehole with irrigation, CCTV security system, and a gas...

Features

Pets Allowed Yes

Interior

Bedrooms	3
Bathrooms	2
Kitchens	1
Recep. Rooms	3
Furnished	No

Exterior

Garages	2
Carports / Parkings	6
Security	Yes
Pool	Yes
Views	False

Sizes

Land Size	991m²
-----------	-------

