



Yolanda Honiball
082 723 4850
yolandahoniball@dpg.co.za

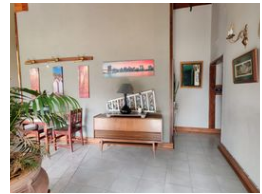
Contact Vereeniging

016 4232876

Vision 21, Industrial Park,
Shop 26,
Steel Road,
Duncanville,
Vereeniging



Web Ref DPR19281



R1,895,000

🛏 4 🚿 2

Monthly Bond Repayment R18,919.30

Calculated over 20 years at 10.5% with no deposit.

Transfer Costs R69,008.00

Bond Costs R32,760.00

These calculations are only a guide. Please ask your conveyancer for exact calculations.

Monthly Rates R1,800

Rustic soul with modern heart

Discover the perfect blend of rustic charm and modern convenience with this beautiful farm-style home situated on a spacious stand in the sought-after suburb of Risiville. This character-filled property features warm wooden finishes and stunning double-volume wooden ceilings that create a cozy, inviting atmosphere. The main house offers four generously sized bedrooms and two bathrooms—one with a bath and shower, and the other with a shower only—making it ideal for family living. The spacious lounge and dining room provide ample space for entertaining or relaxing with loved ones. The kitchen is both practical and stylish, fitted with solid wooden countertops, a gas hob, and plenty of cupboard space to meet all your storage needs.

Sustainability is a key feature of this home, with a powerful 12 KVA solar system and batteries, as...

Features

Pets Allowed	Yes				
Interior		Exterior		Sizes	
Bedrooms	4	Carports / Parkings	4	Land Size	1,742m²
Bathrooms	2	Security	Yes		
Kitchens	1	Pool	Yes		
Recep. Rooms	3	Views	False		
Furnished	No				

