



Yolanda Honiball
082 723 4850
yolandahoniball@dpg.co.za

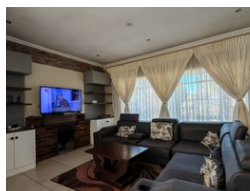
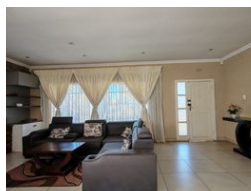
Contact Vanderbijlpark /
Sasolburg

016 4232876

Vision 21, Industrial Park,
Shop 26,
Steel Road,
Duncanville,
Vereeniging



Web Ref DPR19934



R1,680,000

🛏 4 🚿 2 🚗 1

Monthly Bond Repayment R17,055.85

Calculated over 20 years at 10.75% with no deposit.

Transfer Costs R53,839.00 **Bond Costs** R30,875.00

These calculations are only a guide. Please ask your conveyancer for exact calculations.

Monthly Rates R1,000

Family Home with Endless Potential

Situated in the sought-after suburb of Risiville, this spacious 4-bedroom home offers the perfect combination of comfort, practicality, and potential—ideal for families looking to settle in a quiet area close to schools and shops. With a generous layout and solid structure, this property is ready to welcome its next chapter. All four bedrooms are fitted with built-in cupboards, providing ample storage space, while the master bedroom includes a full en-suite bathroom with bath, shower, toilet, and basin. Three of the bedrooms are tiled, while the guest bedroom features warm laminated flooring. A second full bathroom ensures convenience for the rest of the household. The open-plan design of the kitchen, dining, and living areas creates a seamless flow, ideal for modern family living. The living room boasts a charming fireplace,...

Features

Pets Allowed		Yes			
Interior				Sizes	
Bedrooms	4	Exterior		Land Size	991m²
Bathrooms	2	Garages	1		
Kitchens	1	Security	Yes		
Recep. Rooms	2	Pool	No		
Furnished	No	Views	False		

