



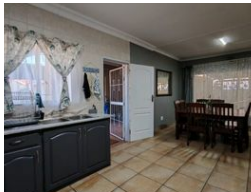
Yolanda Honiball
082 723 4850
yolandahoniball@dpg.co.za

Contact Meyerton
016 0042352

24 Glynn Street
Rothdene,
Meyerton,
1961



Web Ref DPR21549



R1,500,000

3 2 2

Monthly Bond Repayment R14,975.70
Calculated over 20 years at 10.5% with no deposit.
Transfer Costs R45,887.00 **Bond Costs** R28,990.00
These calculations are only a guide. Please ask your conveyancer for exact calculations.
Monthly Rates R1,100

Spacious Family Home with Flatlet

This beautifully designed family home offers everything you need for comfortable and stylish living. Featuring three generously sized bedrooms and two modern bathrooms, the main house is ideal for a growing family. The open-plan kitchen is both functional and elegant, complete with a pantry and separate laundry area for added convenience. It flows seamlessly into the dining area and a warm, inviting TV room, creating the perfect space for everyday living and entertaining. Step outside to enjoy the built-in braai and sparkling swimming pool – ideal for weekend gatherings and relaxing summer afternoons. With two secure garages and ample storage throughout, this home is designed with practicality in mind, while maintaining a high standard of finish and detail.

Adding even more value is the fully self-contained flatlet, perfect...

Features

Pets Allowed	Yes				
Interior		Exterior		Sizes	
Bedrooms	3	Garages	2	Land Size	979m²
Bathrooms	2	Carports / Parkings	2		
Kitchens	1	Security	Yes		
Recep. Rooms	1	Pool	Yes		
Furnished	No	Views	False		

