

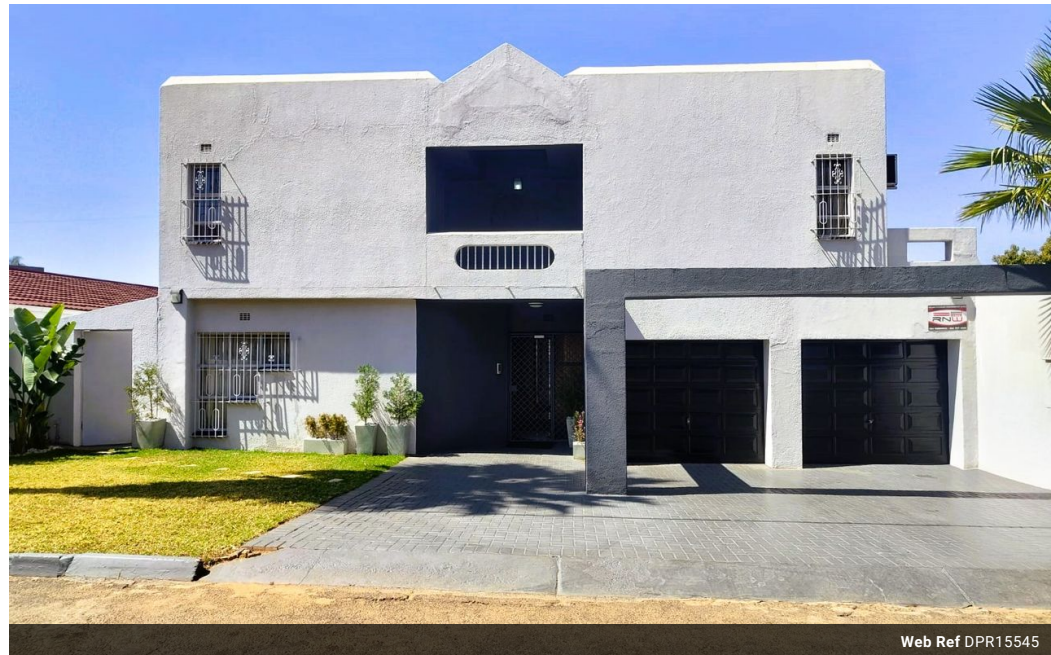


Hasiena Hassen
0846178688
hasienahassen@dpg.co.za

Contact Vereeniging

016 4232876

Vision 21, Industrial Park,
Shop 26,
Steel Road,
Duncanville,
Vereeniging



Web Ref DPR15545



R3,750,000

4 3 2

Monthly Bond Repayment R38,071.09

Calculated over 20 years at 10.75% with no deposit.

Transfer Costs R251,382.00 **Bond Costs** R49,725.00

These calculations are only a guide. Please ask your conveyancer for exact calculations.

Monthly Rates R1,400

Elegant Double-Story Roshnee Retreat

Discover the height of luxury in this exquisite double-story home nestled in the prestigious neighborhood of Roshnee. With sleek modern design and premium finishes, this property offers a truly elevated living experience. The ground floor features a stylish open-plan lounge and dining area, adorned with plush carpeting and bathed in natural light. A separate sitting room provides a peaceful retreat, leading through a secure trellidor door to a sparkling outdoor pool and entertainment area. This level also includes a guest room, a modern guest bathroom, a contemporary kitchen with a scullery, a spacious pantry, and staff quarters complete with a private bathroom.

The upper floor is a tranquil haven, housing three generously sized bedrooms, each fitted with built-in cupboards and offering access to balconies with breathtaking...

Features

Pets Allowed		Yes			
Interior		Exterior		Sizes	
Bedrooms	4	Garages	2	Land Size	446m²
Bathrooms	3	Security	Yes		
Kitchens	1	Dom. Accom.	1		
Recep. Rooms	4	Pool	Yes		
Furnished	No	Views	False		

Extras

Jacuzzi Intercom Balcony Domestic Bathroom Bathroom Staff Quarters Domestic Rooms
Under Floor Heating

