



Charline Van der Walt
0760568279
charlinevdwalt@dpg.co.za



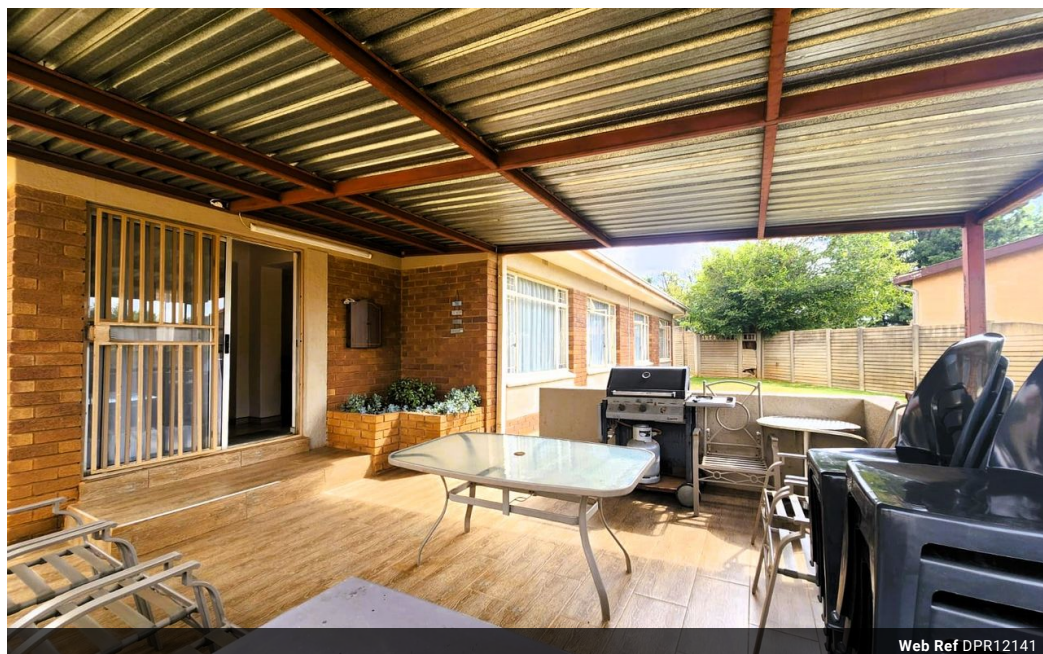
Jacqueline Lombaard
0836216762

jacquelinelombaard@dpg.co.za

Contact Vereeniging

016 4232876

Vision 21, Industrial Park,
Shop 26,
Steel Road,
Duncanville,
Vereeniging



Web Ref DPR12141



R1,180,000

🛏 3 🚿 2

Monthly Bond Repayment R11,979.70

Calculated over 20 years at 10.75% with no deposit.

Transfer Costs R32,749.00 **Bond Costs** R25,220.00

These calculations are only a guide. Please ask your conveyancer for exact calculations.

Monthly Rates R1,800

3 Bedroom Family home in Sonlandpark

Introducing this newly renovated family home in the heart of Sonland Park, offering comfort, style, and space for the whole family. Boasting 3 bedrooms and 2 bathrooms, including a main en-suite, this home is perfect for modern living. The beautiful kitchen features an open-plan design, seamlessly flowing into the dining and living area, creating a welcoming space for gatherings and everyday living. The house is elegantly tiled with porcelain tiles, adding a touch of sophistication.

Situated on a generous 1112m² stand, there is ample space to expand or create your dream outdoor oasis, whether it be a pool area for entertaining or a lush garden retreat. The added bonus of a bachelor's flat provides versatility for extended family, guests, or potential rental income. For peace of mind, the property is equipped with an alarm...

Features

| | | | | | |
|---------------------|----|---------------------|-------|--------------|---------------------|
| Pets Allowed | | Yes | | | |
| Interior | | Exterior | | Sizes | |
| Bedrooms | 3 | Carports / Parkings | 3 | Land Size | 1,112m ² |
| Bathrooms | 2 | Security | Yes | | |
| Kitchens | 1 | Pool | No | | |
| Recep. Rooms | 2 | Views | False | | |
| Furnished | No | | | | |

Extras

Cooling Fans Covered Patio Security Gate Open Plan Special Feature Breakfast Nook