



Jacqueline Lombaard
0836216762
jacquelinelombaard@dpg.co.za

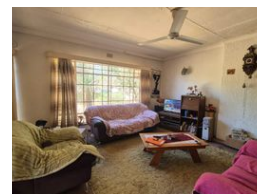
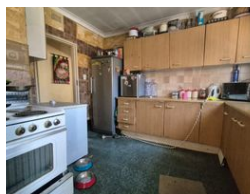
Contact Vereeniging

016 4232876

Vision 21, Industrial Park,
Shop 26,
Steel Road,
Duncanville,
Vereeniging



Web Ref DPR15916



R850,000

🛏 3 🚿 1.5

Monthly Bond Repayment R8,486.23

Calculated over 20 years at 10.5% with no deposit.

Transfer Costs R28,334.00 **Bond Costs** R21,450.00

These calculations are only a guide. Please ask your conveyancer for exact calculations.

Monthly Rates R1,200

Ideal Bargain Buy Near Amenities!

Three-bedroom house located in the highly sought-after neighborhood of Sonland Park. This home offers great potential and is perfect for a family looking to settle in a quiet, well-established area. While neat and well-maintained, the property would benefit from some TLC, allowing you to add your personal touch and make it truly your own. Inside, the home features three spacious bedrooms, perfect for a growing family. There is one full bathroom and an additional half bathroom for added convenience. The family room provides a cozy space for relaxing or entertaining, and the kitchen is well-sized, ready for some modern updates.

Outside, there is a separate bachelor flatlet, ideal for extended family, guests, or rental income. A carport provides covered parking, and the large yard offers plenty of space for children to play....

Features

Pets Allowed	Yes			
Interior		Exterior		Sizes
Bedrooms	3	Carports / Parkings	2	Land Size
Bathrooms	1.5	Security	Yes	1,015m²
Kitchens	1	Pool	No	
Recep. Rooms	1	Views	False	
Furnished	No			

