

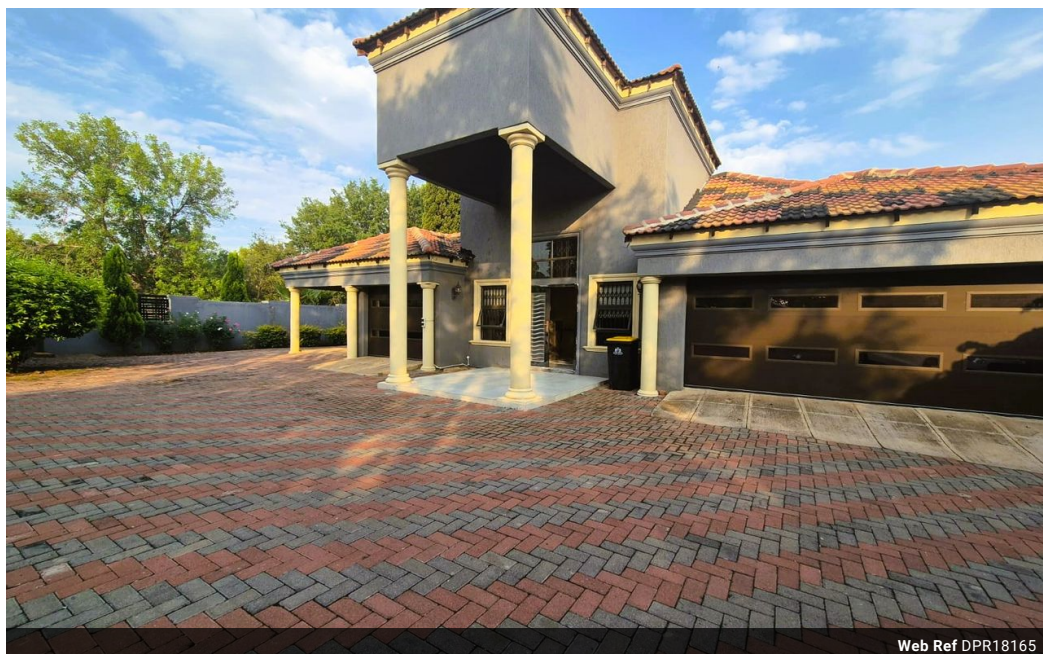


Jacqueline Lombaard
0836216762
jacquelinelombaard@dpg.co.za

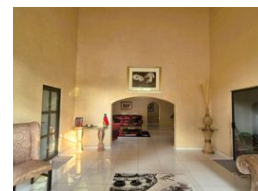
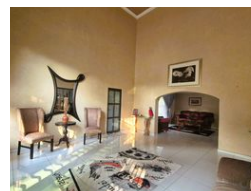
Contact Vereeniging

016 4232876

Vision 21, Industrial Park,
Shop 26,
Steel Road,
Duncanville,
Vereeniging



Web Ref DPR18165



R1,950,000

🛏️ 3 🚿 2 🏠 3

Monthly Bond Repayment R19,468.41

Calculated over 20 years at 10.5% with no deposit.

Transfer Costs R72,308.00 **Bond Costs** R32,760.00

These calculations are only a guide. Please ask your conveyancer for exact calculations.

Monthly Rates R1,600

Beautifully Manicured Home With Flatlet!

This stunning family home in Sonland Park offers everything you need for comfortable and modern living. As you enter, you're welcomed by a spacious entrance leading into an open-plan living area with absolutely breathtaking finishes. The home boasts three generous bedrooms and two well-appointed bathrooms, ensuring plenty of space for the whole family. The main bedroom is a true retreat, featuring its own private entertainment room, a study, and a walk-in closet. The beautiful kitchen is designed for both functionality and style, making meal preparation a delight. With solar panels installed, this home is energy-efficient and cost-effective. The property also includes three lock-up garages and two carports, providing ample parking and storage space.

Conveniently located within walking distance of Sonland park Primary School...

Features

Pets Allowed	Yes				
Interior		Exterior		Sizes	
Bedrooms	3	Garages	3	Land Size	1,115m²
Bathrooms	2	Carports / Parkings	2		
Kitchens	1	Security	Yes		
Recep. Rooms	2	Pool	No		
Studies	1	Views	False		
Furnished	No				

