



Jacqueline Lombaard
0836216762
jacquelinelombaard@dpg.co.za

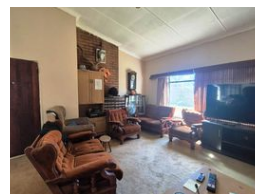
Contact Vereeniging

016 4232876

18 Klipriver Drive
Three Rivers
Vereeniging



Web Ref DPR20107



R933,000

4 2 2

Monthly Bond Repayment R9,472.09

Calculated over 20 years at 10.75% with no deposit.

Transfer Costs R30,412.00 **Bond Costs** R23,335.00

These calculations are only a guide. Please ask your conveyancer for exact calculations.

Monthly Rates R1,100

Bargain Family Home Ideally Located!

This generously sized family home in the heart of Sonlandpark offers endless potential and is perfect for buyers looking to add their personal touch. Featuring four well-proportioned bedrooms and two bathrooms, this property provides ample space for a growing family. The open-plan living and dining area creates a warm and welcoming atmosphere, ideal for both everyday living and entertaining. The kitchen is functional and ready for an upgrade, offering you the opportunity to design it to suit your taste. With a little TLC, this home can truly shine and become a beautiful, modern family retreat.

Additional features include a double garage, providing secure parking and extra storage space. The property is set on a generous stand, offering plenty of room for outdoor living, gardening, or future extensions. Situated in a quiet and...

Features

Pets Allowed	Yes				
Interior		Exterior		Sizes	
Bedrooms	4	Garages	2	Land Size	1,106m ²
Bathrooms	2	Security	Yes		
Kitchens	1	Pool	No		
Recep. Rooms	2	Views	False		
Furnished	No				