



Botle Mokoena
0837550609
botlemokoena@dpg.co.za

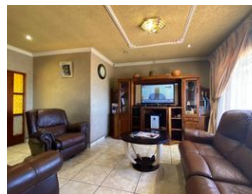
Contact Vereeniging

016 4232876

Vision 21, Industrial Park,
Shop 26,
Steel Road,
Duncanville,
Vereeniging



Web Ref DPR16560



R1,100,000

 4  2.5  2

Monthly Bond Repayment R10,982.18

Calculated over 20 years at 10.5% with no deposit.

Transfer Costs R32,851.00 **Bond Costs** R25,220.00

These calculations are only a guide. Please ask your conveyancer for exact calculations.

Monthly Rates R1,500

Beautiful Family Home with Amenities

This beautiful home is thoughtfully designed for modern comfort and convenience. The kitchen, complete with an under-counter oven, provides an ideal space for cooking and meal preparation, while the adjacent dining room is perfect for family dinners and gatherings. The spacious lounge features air conditioning, ensuring a comfortable environment for relaxation year-round. Four well-sized bedrooms, each with built-in cupboards, offer ample storage and a restful retreat for each family member. The home includes three bathrooms, one of which is en suite, along with an additional bathroom and separate toilet to accommodate busy mornings with ease.

Outside, this property boasts two secure garages, providing parking and storage space, along with a shed for additional storage needs. A solar geyser adds an energy-efficient feature,...

Features

Pets Allowed		Yes			
Interior		Exterior		Sizes	
Bedrooms	4	Garages	2	Land Size	1,739m²
Bathrooms	2.5	Security	Yes		
Kitchens	1	Pool	No		
Recep. Rooms	2	Views	False		
Furnished	No				

