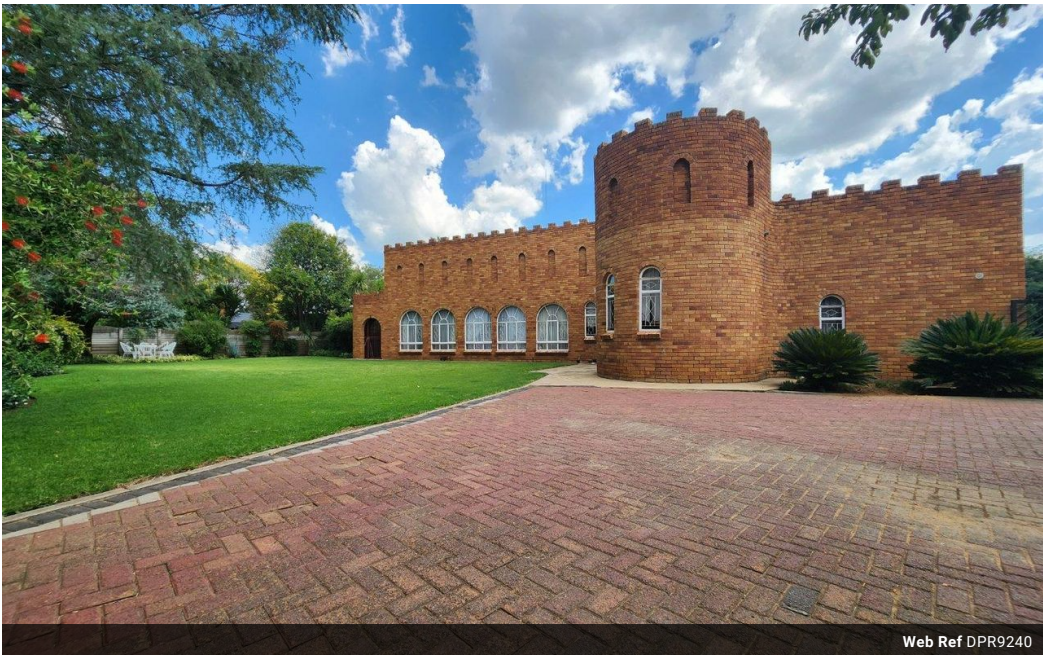




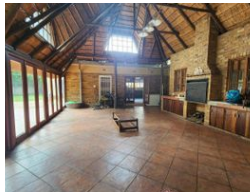
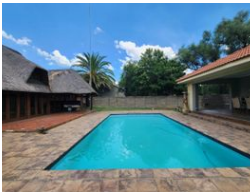
**Charline Van der Walt**  
0760568279  
charlinevdwalt@dpg.co.za

Contact Vereeniging  
**016 4232876**

Vision 21, Industrial Park,  
Shop 26,  
Steel Road,  
Duncanville,  
Vereeniging



Web Ref DPR9240



**R2,100,000**

5 2.5 2

**Monthly Bond Repayment** R20,965.98  
Calculated over 20 years at 10.5% with no deposit.  
**Transfer Costs** R84,088.00 **Bond Costs** R34,625.00  
These calculations are only a guide. Please ask your conveyancer for exact calculations.  
**Monthly Rates** R1,800

Perfectly located large family home

Be the master of your own castle in this unique and spacious 5-bedroom family home. Designed with high volume ceilings and exposed beams in certain rooms, this home exudes character and charm. As you enter, you are greeted by a large entrance leading to a cozy TV room with a fitted bar, a separate lounge, and a dining area. The magnificent kitchen is designed to be the heart of the home, featuring state-of-the-art lights, taps, and fittings, Caesarstone tops, and a large separate laundry and scullery. Ideal for entertaining, the home boasts an impressive Lapa that is enclosed and large enough to accommodate a patio set, loungers, and even a pool table. This versatile space can also be used as a home gym, perfect for staying active without leaving the comfort of your home.

The 5 bedrooms are all generously sized, with enough...

Features

Pets Allowed		Yes			
Interior		Exterior		Sizes	
Bedrooms	5	Garages	2	Land Size	1,980m²
Bathrooms	2.5	Security	Yes		
Kitchens	1	Pool	Yes		
Recep. Rooms	2	Views	False		
Studies	1				
Furnished	No				

