

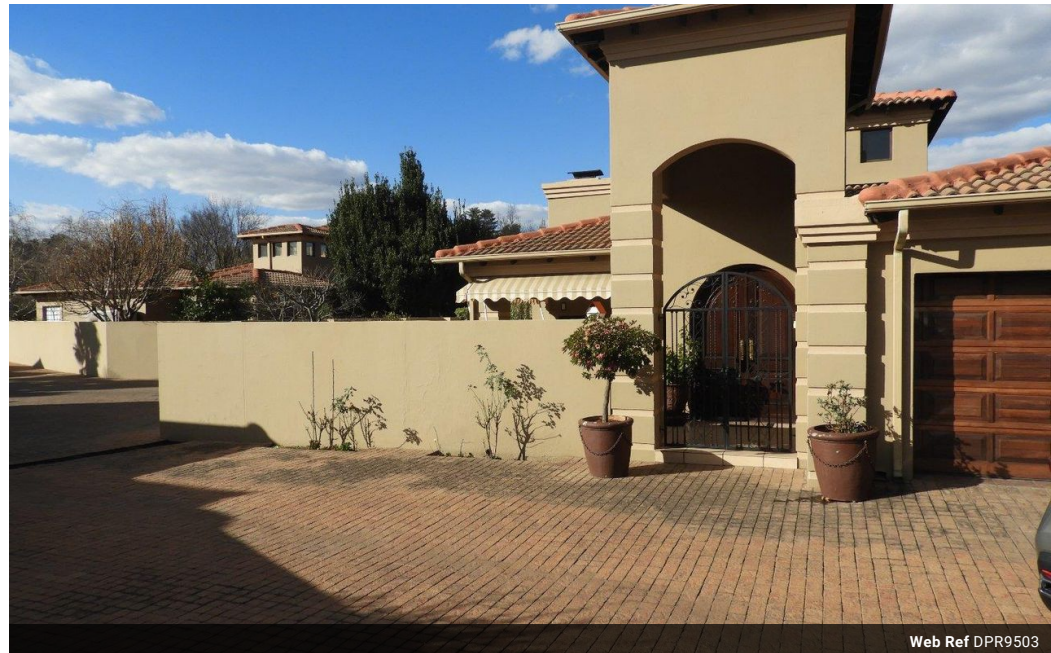


**Charline Van der Walt**  
0760568279  
charlinevdwalt@dpg.co.za

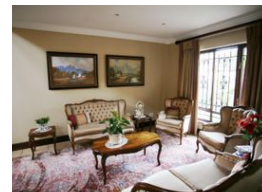
Contact Vereeniging

016 4232876

Vision 21, Industrial Park,  
Shop 26,  
Steel Road,  
Duncanville,  
Vereeniging



Web Ref DPR9503



**R2,050,000**

2 2 2

**Monthly Bond Repayment** R20,812.19

Calculated over 20 years at 10.75% with no deposit.

**Transfer Costs** R80,947.00 **Bond Costs** R34,625.00

These calculations are only a guide. Please ask your conveyancer for exact calculations.

**Monthly Levy** R600 **Monthly Rates** R2,400 **Special Levy** R350

Architectural Italian design, secured complex!

Impressive entrance inviting you via wooden doors to a luxurious, double volume, sunlit living room and a spacious reception area. Featuring a lounge, open plan dining and formal lounge, ideally open to allow maximum natural light and comfortable living areas. Chandeliers and high volume windows are only some of the exquisite features that makes this home an absolute stunner and of immaculate design and condition. Next you are lead to a dream kitchen that is equipped with enough space for a chef to cook a 3 course meal while guests enjoy their cocktails in a beautiful, evergreen garden surrounded by peace and tranquility. The kitchen has a separate scullery to host additional kitchen equipment as well as provide a wash up area.

The state of the art finishes and fittings are displayed throughout the property, where as the...

## Features

<b>Pets Allowed</b>	Yes			
<b>Interior</b>		<b>Exterior</b>		<b>Sizes</b>
Bedrooms	2	Garages	2	Land Size
Bathrooms	2	Security	Yes	503m²
Kitchens	1	Pool	No	
Recep. Rooms	2	Views	False	
Furnished	No			

