

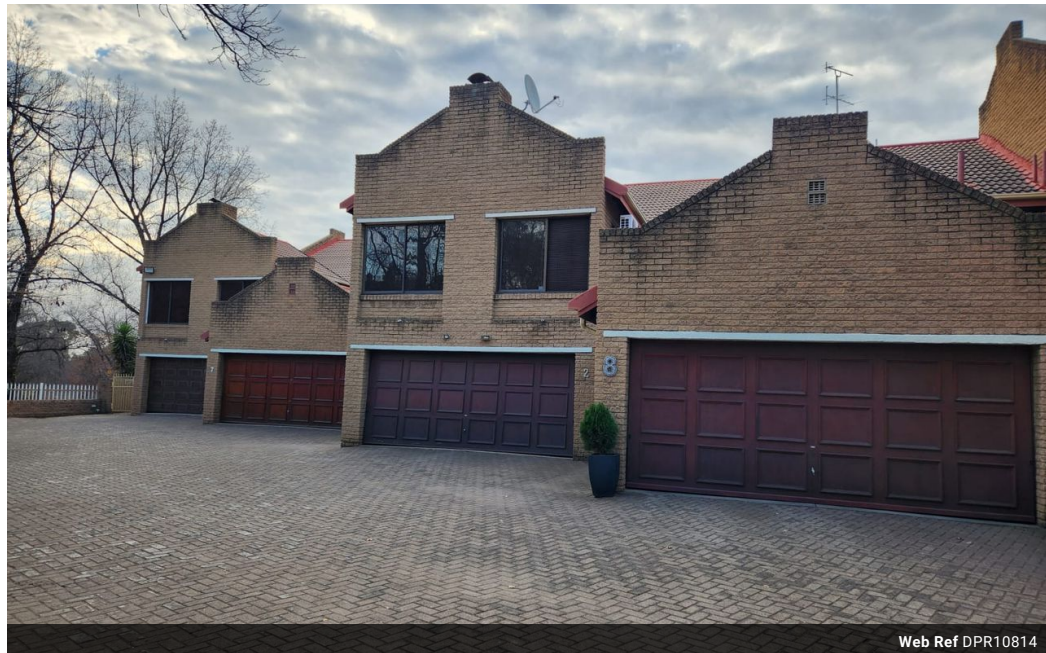


Charline Van der Walt
0760568279
charlinevdwalt@dpg.co.za

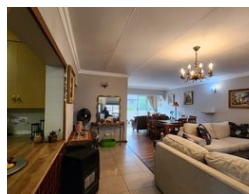
Contact Vereeniging

016 4232876

Vision 21, Industrial Park,
Shop 26,
Steel Road,
Duncanville,
Vereeniging



Web Ref DPR10814



R1,095,000

🛏 3 🚿 2.5 🚗 2

Monthly Bond Repayment R11,116.76

Calculated over 20 years at 10.75% with no deposit.

Transfer Costs R32,749.00 **Bond Costs** R25,220.00

These calculations are only a guide. Please ask your conveyancer for exact calculations.

Monthly Levy R4,500 **Monthly Rates** R950

Beautiful, ideal face brick townhouse!

This stunning and secure face brick townhouse offers both elegance and practicality. Boasting three north-facing, sun-drenched bedrooms, each equipped with built-in cupboards, this home exudes comfort. The main bedroom is a true gem, featuring a convenient walk-in closet that leads to an en-suite bathroom.

With two bathrooms in total, the first is fully tiled and comprises a bath, basin, and toilet. The second bathroom features modern tiling and consists of a shower, basin, and toilet. The kitchen is a highlight, illuminated by a skylight and adorned with wooden cupboards. It houses a gas stove paired with an electric eye-level oven. Additional provisions include space for a dishwasher, while the adjacent laundry area offers a connection for a washing machine and a fixed ironing board, doubling as a practical workspace.

The...

Features

Interior

Bedrooms	3
Bathrooms	2.5
Kitchens	1
Recep. Rooms	2
Furnished	No

Exterior

Garages	2
Security	Yes
Pool	No
Views	False

Sizes

Floor Size	236m²
------------	-------