



**Estelle Spies**  
0734037057  
estellespies@dpg.co.za

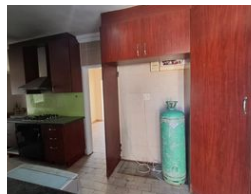
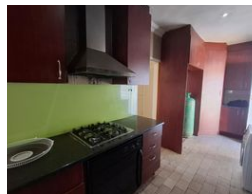
Contact Vereeniging

016 4232876

Vision 21, Industrial Park,  
Shop 26,  
Steel Road,  
Duncanville,  
Vereeniging



Web Ref DPR19301



**R2,090,000**

🛏 3 🚿 3

**Monthly Bond Repayment** R20,866.14

Calculated over 20 years at 10.5% with no deposit.

**Transfer Costs** R83,488.00 **Bond Costs** R34,625.00

These calculations are only a guide. Please ask your conveyancer for exact calculations.

**Monthly Rates** R1,500

## Family Home With Three Flatlets!

This versatile property offers the perfect blend of family comfort and investment potential. The main house features three well-sized bedrooms, ideal for a growing family. A standout feature is the large kitchen, perfectly designed for those who love to cook and entertain. The open-plan living and dining area flows seamlessly, creating a warm and inviting space for gatherings. The home includes a modern double shower with basin and two toilets for added convenience. With a fully installed solar system, you can enjoy energy efficiency and reduced utility costs.

In addition to the main house, the property boasts three flatlets, each equipped with its own kitchen and bathroom – ideal for generating rental income or accommodating extended family. Situated close to all essential amenities including schools, shops, and public...

## Features

<b>Pets Allowed</b>	Yes				
<b>Interior</b>		<b>Exterior</b>		<b>Sizes</b>	
Bedrooms	3	Carports / Parkings	4	Land Size	1,587m²
Bathrooms	3	Security	Yes		
Kitchens	1	Pool	No		
Recep. Rooms	2	Views	False		
Furnished	No				

