



**Jacqueline Lombaard**  
0836216762  
jacquelinelombaard@dpg.co.za

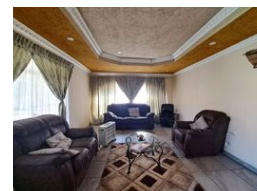
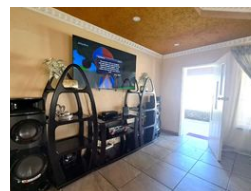
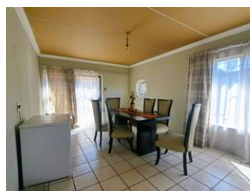
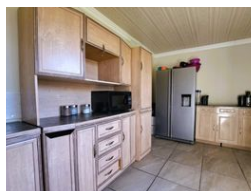
Contact Vereeniging

016 4232876

18 Klipriver Drive  
Three Rivers  
Vereeniging



Web Ref DPR12793



**R967,500**

3 1

**Monthly Bond Repayment** R9,822.34

Calculated over 20 years at 10.75% with no deposit.

**Transfer Costs** R30,412.00 **Bond Costs** R23,335.00

These calculations are only a guide. Please ask your conveyancer for exact calculations.

**Monthly Rates** R1,500

## Picture Perfect Home Near Amenities!

Located in Duncanville, this property presents an exceptional investment opportunity with a plethora of enticing features. The residence boasts a spacious yard that not only offers ample space for relaxation and recreation but also includes a versatile flatlet, promising an additional stream of income through rental opportunities. As you step inside, you're greeted by the expansive lounge and dining area, exuding a sense of openness and comfort. The generous proportions of these spaces provide an ideal setting for family gatherings, entertaining guests, or simply unwinding after a long day. The seamless flow from the lounge to the dining room enhances the sense of cohesion and functionality within the home, ensuring every corner is utilized to its fullest potential.

The kitchen, boasting modern amenities and stylish finishes,...

## Features

|              |    |                     |       |           |         |
|--------------|----|---------------------|-------|-----------|---------|
| Pets Allowed |    | Yes                 |       |           |         |
| Interior     |    | Exterior            |       | Sizes     |         |
| Bedrooms     | 3  | Carports / Parkings | 3     | Land Size | 1,190m² |
| Bathrooms    | 1  | Security            | Yes   |           |         |
| Kitchens     | 1  | Pool                | No    |           |         |
| Recep. Rooms | 2  | Views               | False |           |         |
| Furnished    | No |                     |       |           |         |