



Anne Heyes
083 9635330
anneheyes@dpg.co.za

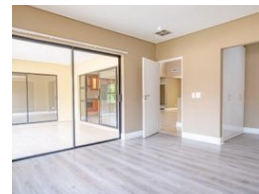
Contact Westville A-Team

031 2664343

1 Knightbridge,
16 Westville Road,
Westville



Web Ref DPR4130



R3,795,000

4 Bedrooms 3 Bathrooms 2 Carports / Parkings

Monthly Bond Repayment R37,888.52

Calculated over 20 years at 10.5% with no deposit.

Transfer Costs R256,473.00 **Bond Costs** R49,725.00

These calculations are only a guide. Please ask your conveyancer for exact calculations.

Monthly Levy R2,809 **Monthly Rates** R2,600

4 BEDROOM SIMPLEX FOR SALE IN DAWNCLIFFE

Get ready to be excited with this trendy number! The upper level features a fabulous floor-plan with 3 double bedrooms, 3 bathrooms (all en-suited) and an open-plan living area. Work from home? Need an office? With multiple living areas, you are spoilt for choice! An easy stroll to the Mall, with Westville Girls High School across the road. "Braeside" is one of Westville's most popular complexes, with the added bonus of low levies. It has the reputation for being well-managed and well-run! You have the assurance of enhanced safety, when children want to wander within the friendly family complex. This townhouse is ready for you to move in and just start living...it's in "tip-top" condition. Sometimes you find a place that simply says "THIS IS HOME"...and this warm inviting freestanding residence says just that!

Features

Interior		Exterior		Sizes	
Bedrooms	4	Garages	2	Floor Size	264m²
Bathrooms	3	Carports / Parkings	2		
Kitchens	1	Security	Yes		
Recep. Rooms	2	Pool	No		
Studies	1	Views	False		
Furnished	No				