



Kyle De Aguiar

Candidate Property Practitioner
Registered with PPRA
(FFC 118 969 8)
072 137 4699
kyled@dpg.co.za

Contact DPG Albertyn/JHB
South

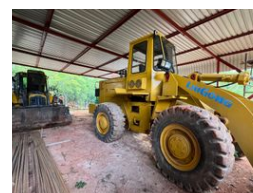
011 5539200

95 Victoria Street,
Oakdene,
Johannesburg,
Gauteng,
2190



SOLE MANDATE

Web Ref DPR1228



R4,800,000

Monthly Bond Repayment R47,922.23

Calculated over 20 years at 10.5% with no deposit.

Transfer Costs R378,348.00 **Bond Costs** R59,150.00

These calculations are only a guide. Please ask your conveyancer for exact calculations.

🛏 4 🚿 3 🏠 6

Farm Being Sold As A Going Concern With Home, Machinery, and a Number of Additional Items.

With its grandstand location and exertion of Beauty, this vast mountainous farm is nestled in a region of White River that is surrounded by Macadamia Farms. The Old Tobacco Farm is only a 10 minute drive from the centre of White River and within a 20 minute drive to Mbombela. The property truly embraces the serenity that encompasses it being placed at the foot of the valley with 4 streams running through the Farm. The Farm sets itself apart from others nearby due to its quality and scale. With endless opportunities at its doorstep, it is looking for a new owner to take it to new grounds.

Details of the Property:

- Stand Size: 83.51ha
- Under Roof: 450sqm
- Old Vintage Tobacco Shed with 2 Bedrooms, a Kitchen
- 2 Bedroom House
- 2 Additional Outbuildings with Ablutions for Staff
- 6x Garages – Extra Length Garage with Storage...

Features

| | | | | | |
|---------------------|-----|---------------------|------|--------------|-------|
| Pets Allowed | Yes | | | | |
| Interior | | Exterior | | Sizes | |
| Bedrooms | 4 | Garages | 6 | Floor Size | 450m² |
| Bathrooms | 3 | Carports / Parkings | 2 | Land Size | 83Ha |
| Kitchens | 2 | Security | Yes | | |
| Recep. Rooms | 4 | Pool | No | | |
| Furnished | No | Views | True | | |

