

Sheila Marumo
076 961 7872
sheila.m@dpg.co.za

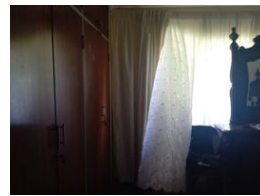
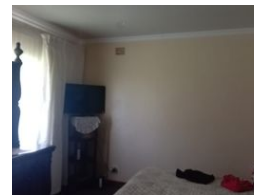
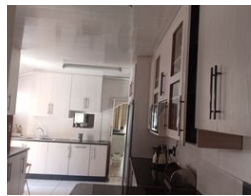
Contact Witbank
013 6961507

5 Woltemade Street,
Witbank Ext 5,
1035

4 Bedroom House For Sale in Duvha Park



Web Ref DPR18519



R1,400,000

🛏️ 4 🚿 1 🚗 1

Monthly Bond Repayment R13,977.32

Calculated over 20 years at 10.5% with no deposit.

Transfer Costs R40,719.00 **Bond Costs** R27,105.00

These calculations are only a guide. Please ask your conveyancer for exact calculations.

Spacious and Perfectly Located.

This beautiful home consist of four bedrooms, one bathroom, a modern kitchen, two living areas, double garage and a braai area. Please call me for viewing.

Features

Pets Allowed	Yes		
Interior		Exterior	
Bedrooms	4	Garages	1
Bathrooms	1	Security	No
Kitchens	1	Pool	No
Recep. Rooms	2	Views	False
Furnished	No		

