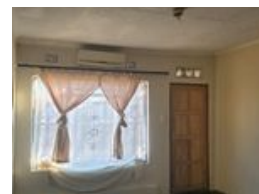
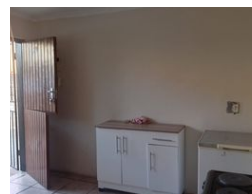
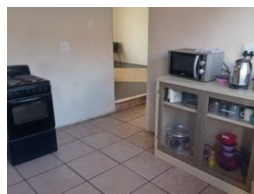
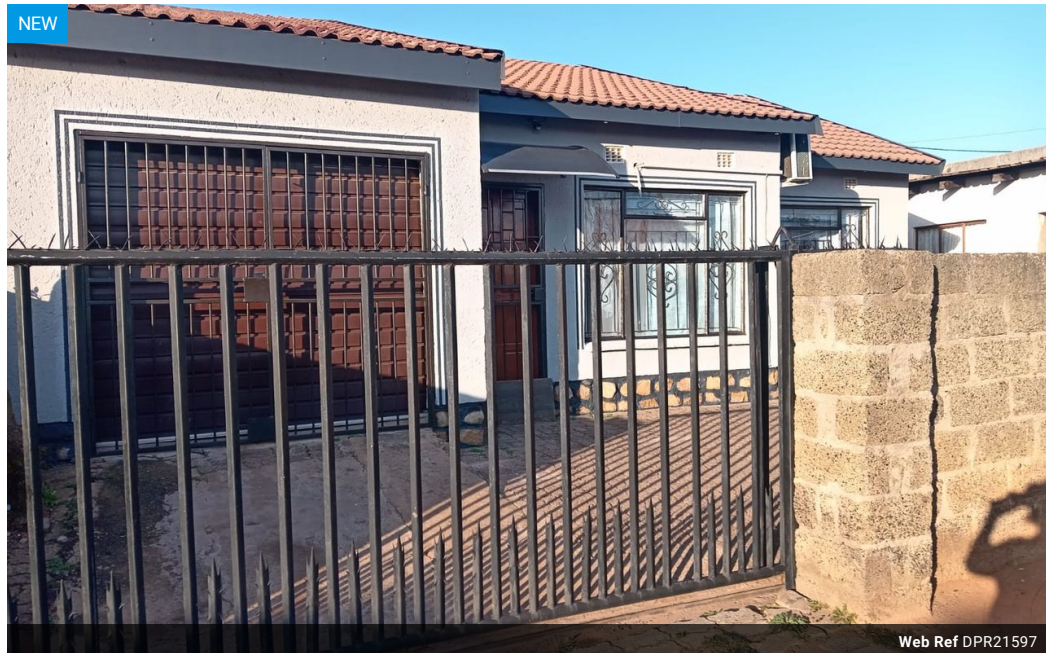




Sheila Marumo
076 961 7872
sheila.m@dpg.co.za

Contact Witbank
013 6961507

5 Woltemade Street,
Witbank Ext 5,
1035



R540,000

2 1 1

Monthly Bond Repayment R5,391.25

Calculated over 20 years at 10.5% with no deposit.

Transfer Costs R21,273.00 **Bond Costs** R15,795.00

These calculations are only a guide. Please ask your conveyancer for exact calculations.

House for sale at Ezinambeni.

This home offers two bedrooms, one outside room with bathroom attached to the house, one living area, kitchen and garage the yard is paved and it is close to the main road, 1 kilometers to schools and 5 km to the Mall, it is actually close to all amenities. it is very clean and need, no work to be done, you just move in and stay.

Features

Pets Allowed Yes

Interior

Bedrooms	2
Bathrooms	1
Kitchens	1
Recep. Rooms	1
Furnished	No

Exterior

Garages	1
Security	No
Pool	No
Views	False