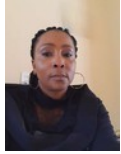


Valencia Mkhathswa
061 021 3704
valencia.m@dpg.co.za



Sheila Marumo
076 961 7872
sheila.m@dpg.co.za

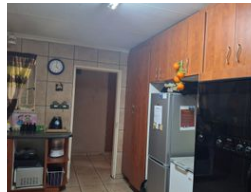
Contact Witbank

013 6961507

5 Woltemade Street,
Witbank Ext 5,
1035



Web Ref DPR21587



R1,400,000

🛏️ 4 🚿 2 🏠 2

Monthly Bond Repayment R13,977.32

Calculated over 20 years at 10.5% with no deposit.

Transfer Costs R40,719.00 **Bond Costs** R27,105.00

These calculations are only a guide. Please ask your conveyancer for exact calculations.

Exceptional Investment Opportunity With Multiple Dwellings and RentaRental Potential.

This versatile property offers the perfect blend of comfortable living and excellent rental income. It features two flats for rental, each flat has one bedroom, bathroom and a kitchen.

The main dwelling includes four spacious bedrooms, open plan lounge and dining area, modern kitchen with eye-level oven and gas stove and a double garage.

Additional features are the swimming pool and a Jojo tank.

This prime property is ideal for investors, large families or those seeking to combine home and office space- all on a spacious stand.

Features

Pets Allowed Yes

Interior

Bedrooms	4
Bathrooms	2
Kitchens	1
Recep. Rooms	2
Furnished	No

Exterior

Garages	2
Carports / Parkings	1
Security	No
Pool	Yes
Views	False