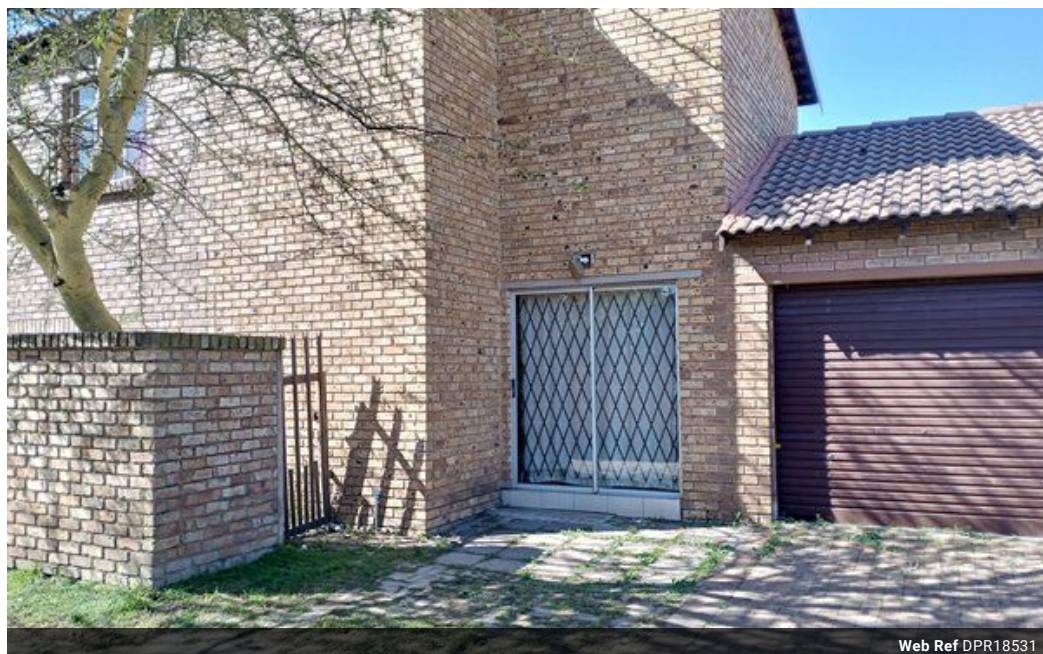


Valencia Mkhathswa
061 021 3704
valencia.m@dpg.co.za

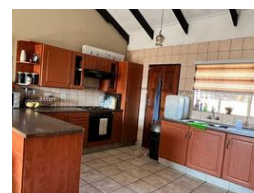
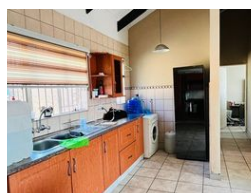
Contact Witbank

013 6961507

5 Woltemade Street,
Witbank Ext 5,
1035



Web Ref DPR18531



R895,000

3 1

Monthly Bond Repayment R9,086.30

Calculated over 20 years at 10.75% with no deposit.

Transfer Costs R28,244.00 **Bond Costs** R21,450.00

These calculations are only a guide. Please ask your conveyancer for exact calculations.

First Time Buyers

This house offers three bedrooms, one living area, kitchen, one bathroom and a garage.
It is a must see.

Features

Interior

Bedrooms	3
Bathrooms	1
Kitchens	1
Recep. Rooms	1
Furnished	No

Exterior

Carports / Parkings	1
Security	No
Pool	No
Views	False

