



**Sheri Minter**  
082 224 0400  
sheriminter@dpg.co.za

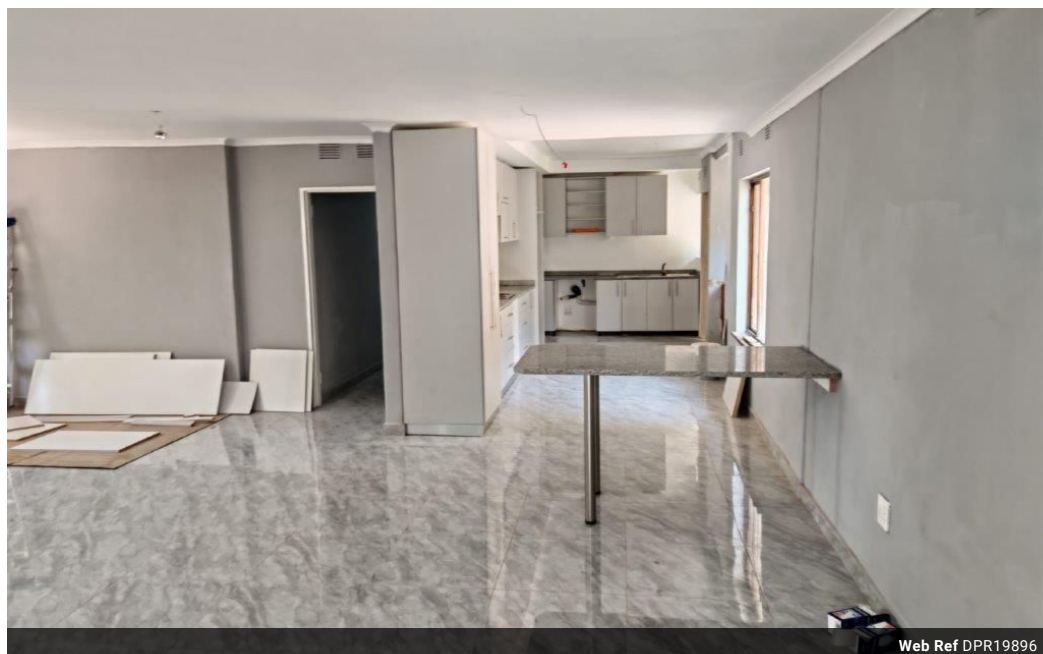


**Jenny Grant**  
082 655 2117  
jennygrant@dpg.co.za

Contact Westville

031 2669091

Shop 1, Gordana Court,  
22/26 Salisbury Avenue,  
Westville



Web Ref DPR19896

**R20,000 pm**

**Lease Period** 12 months  
**Annual Escalation** -

**Availability** Immediately

**Deposit** R20,000

4 2

## \*\*NEWLY REVITALIZED RETREAT IN WESTVILLE\*\*

Discover a welcoming family home nestled in the serene suburb of Chiltern Hills, Westville. This remarkable four-bedroom home, with the never-been-lived-in touch of new refurbishment, presents an unmatched opportunity for gracious living in a secure neighborhood. For just R20,000 per month, step into a world where comfort meets style..

The *\*modern kitchen\** becomes the heart of the home, perfect for family dining and entertaining guests. With two bathrooms, making the large family morning routines now a breeze, catering to every family member's flow.

The house is *\*fully tiled\**, enhancing the sense of seamless space that's felt throughout each of the *\*four generously-sized bedrooms\**. The fourth bedroom can be an additional space, ideal for a *\*spacious work-from-home\** setup, makes this rental home highly adaptable to modern...

## Features

### Interior

Bedrooms	4
Bathrooms	2
Kitchens	1
Recep. Rooms	2
Studies	1
Furnished	No

### Exterior

Carports / Parkings	2
Security	No
Pool	No
Views	False

