



Jenny Grant
082 655 2117
jennygrant@dpg.co.za

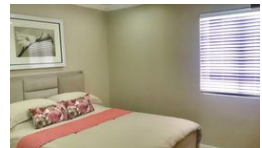
Contact Westville

031 2669091

Shop 1, Gordana Court,
22/26 Salisbury Avenue,
Westville



Web Ref DPR16053



R10,500 pm

Lease Period 12 months
Annual Escalation -

Availability 01 Jul 2025 Deposit -

🛏 2 🚿 2

STUNNING Penthouse -- Westwood estates

Modern emaculate Penthouse unit in mot sought after complex which is renowned for their security and controlled access. Open plan lounge with air conditioner plus dining area, ample cupboard space all leading off onto tiled patio area. Spacious fully tiled bedrooms, and stunning bathrooms. Unit is available mid December. Newly installed Monkey Screens, Pre paid electricity meter excludes water, sewerage, refuse etc. Communal engtertainment area with swimming pool and braai facilities.

Features

Interior

Bedrooms	2
Bathrooms	2
Kitchens	1
Recep. Rooms	1
Furnished	No

Exterior

Carports / Parkings	1
Security	Yes
Pool	Yes
Views	False