

1 Bedroom Garden Cottage To Let in Bluff



Kaylyn Olivier
079 463 3244
kaylynolivier@dpg.co.za

Contact Head Office - Dormehl
Lite

012 0000000

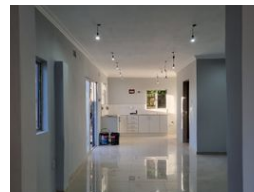
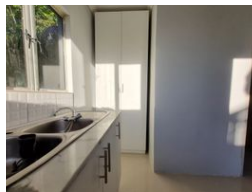
1170 Moulton Avenue
Waverley
0184

FEATURED



SOLE MANDATE

Web Ref DPR19482



R7,000 pm

 1  1

Lease Period 12 months

Annual Escalation -

Lease Excludes:

pool and entertainment area

Availability Immediately

Deposit -

Modern cottage

Step into this beautifully renovated one bedroom, one bathroom cottage featuring sleek modern finishes throughout. Enjoy an open plan lounge and kitchen with built-in cupboards, perfect for easy living. Located on a secure shared property with one dedicated parking bay. Ideal for a professional or couple seeking comfort and convenience.

Features

Interior

Bedrooms	1
Bathrooms	1
Kitchens	1
Recep. Rooms	1
Furnished	No

Exterior

Carports / Parkings	1
Security	Yes
Pool	No
Views	False

Sizes

Floor Size	73m ²
Land Size	870m ²

Extras

24 Hour Access Bachelor Studio