



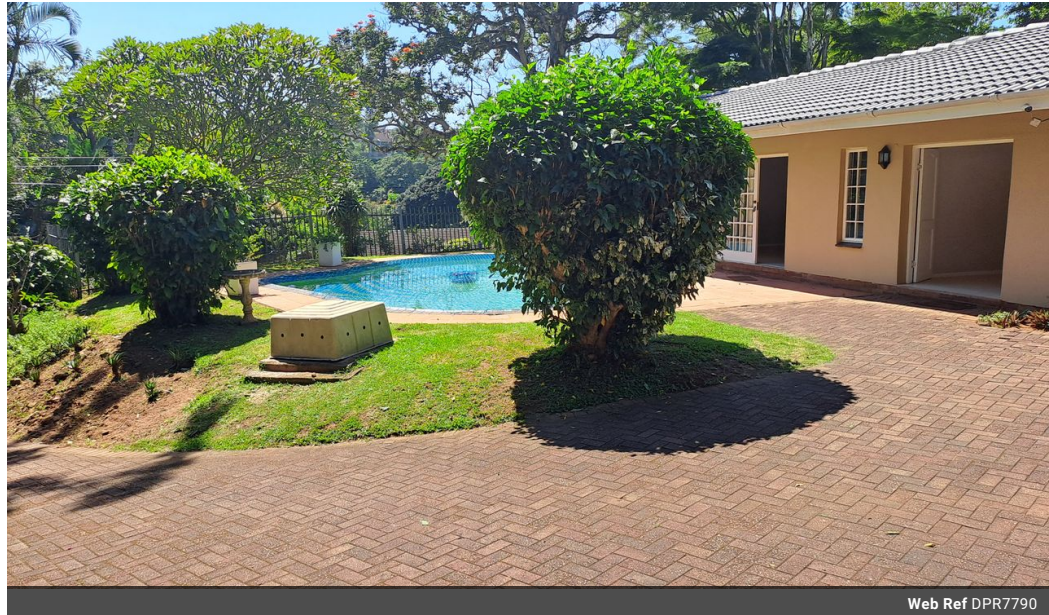
Jenny Grant
082 655 2117
jennygrant@dpg.co.za

Contact Westville

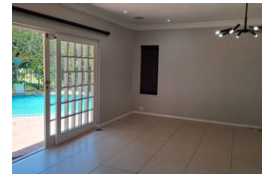
031 2669091

Shop 1, Gordana Court,
22/26 Salisbury Avenue,
Westville

4 Bedroom House To Let in Dawncliffe



Web Ref DPR7790



R20,000 pm

Lease Period 12 months **Availability** 01 Jun 2025 **Deposit** R40,000

Annual Escalation -

Lease Excludes:

Electricity is on prepaid, water, sewerage and refuse is excluded.
Excludes Swimming Pool and Garden service.

4 2.5 2

Elevated Home in Heart of Dawncliffe

Exceptional spacious 4 bedroom home, in sought after Dawncliffe, zoned for all central schools. From entering the home one gets the feeling of space, lovely flow into both lounges and separate dining room. All lounges lead off onto pool area, great for entertaining. Off the dining room is a separate dining area leading directly into the fully fitted kitchen. Amazing main en suit bathroom, ample cupboard space within the main en suit. Guest bathroom plus extra separate toilet. This family home is elevated, fully fenced, auto gates with double auto garages, ample parking. Double deposit - not negotiable.!!! Pre paid electricity meter, water excluded. Pool and Garden service is excluded in the rental.

Features

Pets Allowed Yes

Interior

Bedrooms	4
Bathrooms	2.5
Kitchens	1
Recep. Rooms	3
Furnished	No

Exterior

Garages	2
Carports / Parkings	4
Security	No
Dom. Accom.	1
Pool	Yes
Views	False