



Mervin Donnelly
061 696 8809
mervin.d@dpg.co.za

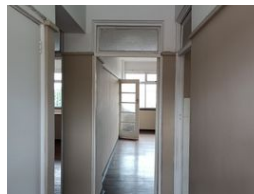
Contact Head Office - Dormehl
Lite

012 0000000

1170 Moulton Avenue
Waverley
0184



Web Ref DPR19431



R5,000 pm

Lease Period 12 months
Annual Escalation -

Availability Immediately

Deposit -

1.5 1

spacious 1.5 bedroom to let in Glenwood!!!

Dormehl Phalane proudly presents this spacious 1.5 bedroom to let in Glenwood. The property consists of:
1 spacious bedroom fully fitted
family bathroom
half bedroom can fit a double bed
fitted kitchen
spacious lounge

To view the property please contact Mervin Donnelly

Features

Interior

Bedrooms	1.5
Bathrooms	1
Kitchens	1
Recep. Rooms	1
Furnished	No

Exterior

Security	Yes
Pool	No
Views	False