

1 Bedroom Garden Cottage To Let in Sydenham

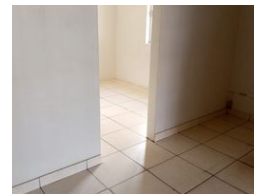
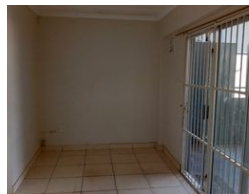


Stacy Fernandez
069 354 3613
stacy.f@dpg.co.za

Contact Head Office - Dormehl
Lite

012 0000000

1170 Moulton Avenue
Waverley
0184



R5,200 pm

Lease Period 12 months
Annual Escalation 10 %

Availability Immediately **Deposit** R5,200

 1  1

ONE BEDROOM COTTAGE TO LET!

DORMEHL PHALANE PROPERTY GROUP offers you this one bedroom fully fitted cottage. This cottage is suitable for a matured single or a couple with sober habits. It has a open plan lounge and kitchen with a En-suite in bedroom. It has a prepaid meter with water included in rental. Well maintained and secured property. Immediate occupancy with under cover parking available.

Features

Interior

Bedrooms	1
Bathrooms	1
Kitchens	1
Recep. Rooms	1
Furnished	No

Exterior

Carports / Parkings	1
Security	No
Pool	No
Views	False

Sizes

Land Size	523m ²
-----------	-------------------